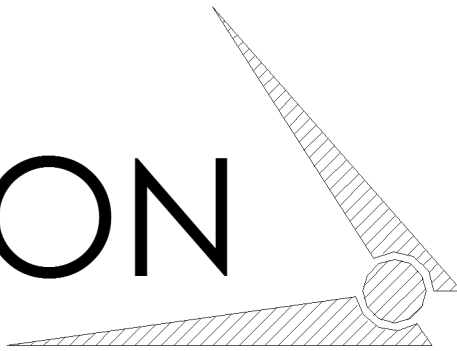


CHAMPION

Hoist and Equipment

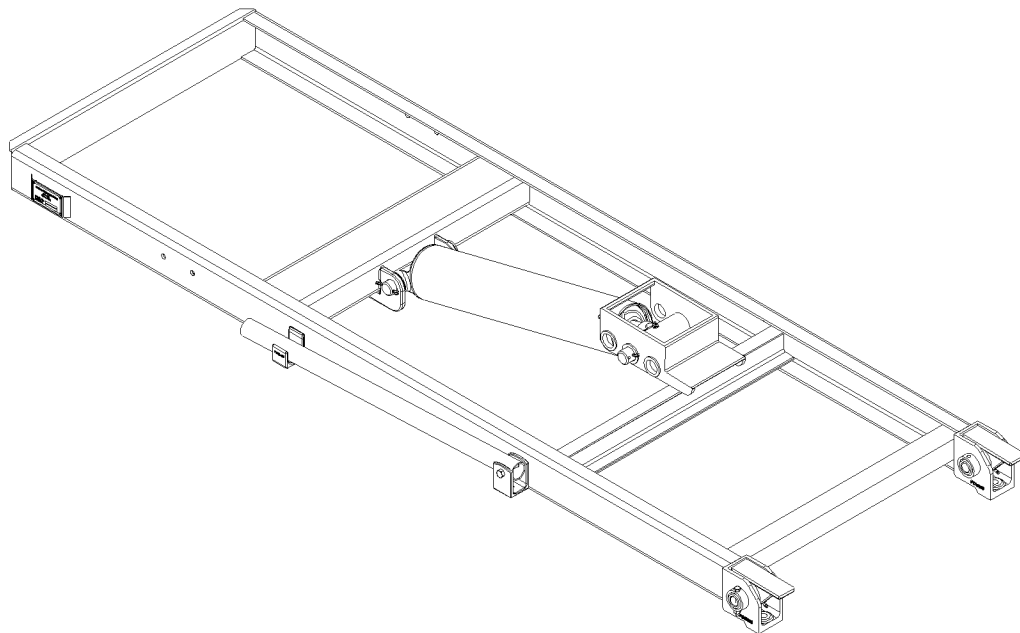


AN AFFILIATE OF

The **Godwin**
 **Group**

200 CHAMPION DRIVE
DUNN, NC. 28334
(910) 897-4995 FAX: (910) 897-7306

524DM, 624DM UNDERBODY HOIST



Operation & Installation Manual

CHAMPION HOIST & EQUIPMENT

200 Champion Drive

Dunn, N.C. 28334

800-649-4995

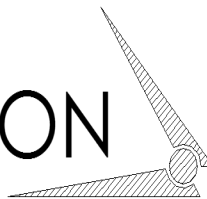
3/2009

524DM, 624DM UNDERBODY HOIST

Table of Contents

Page 4	Service Information
Page 5-6	Operations and Service Do's & Don'ts (SAFTY INFORMATION)
Page 7	Hoist Operation Instructions
Page 8-9	Champion Subframe Hoist Installation Procedures
Page 10	Subframe Installation Detail
Page 11	Lubrication Instructions
Page 12	Safety Prop Cup Installation
Page 13	P21 8-C Hydraulic Plumbing Diagram
Page 14	P20 Series Pumps
Page 15	15/21 Quart Reservoir Assembly
Page 16	Double Acting Electric Over Hydraulic Pump Plumbing Diagram
Page 17	Double Acting Electric Over Hydraulic Pump
Page 18-20	Parts, Performance, and Layout Dimensions

CHAMPION
Hoist and Equipment



CHAMPION HOIST AND EQUIPMENT

200 CHAMPION DRIVE
DUNN, N.C. 28334

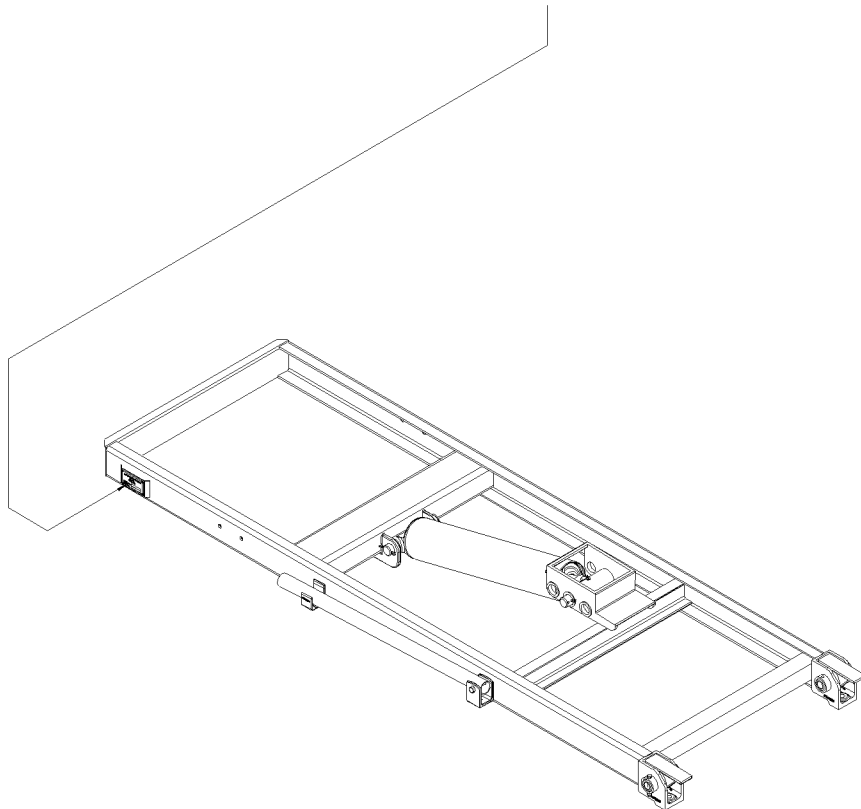
Phone# (800) -649-4995

Phone# (910) -897-4995

fax# (910) -897-7306

when calling, specify (parts) - (service) - (sales)
have the following information on hand for
faster service, body model # & Serial #
hoist model # & serial #
year, make, type of truck.

this information is provided as indicated

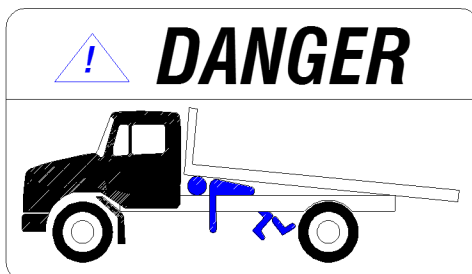


Operations and Service Manual

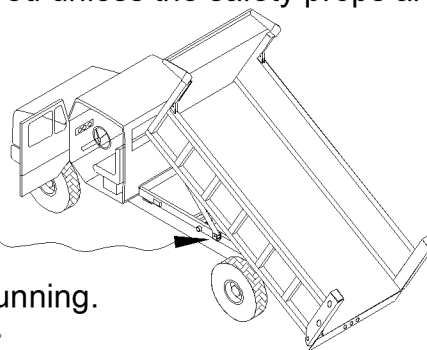
Do not operate this equipment without fully reading and understanding this manual.

Do not allow unauthorized personnel to operate this equipment.

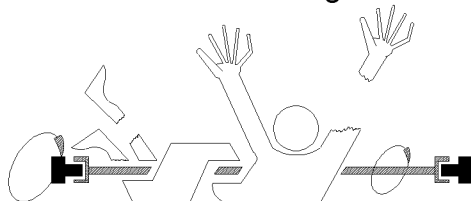
Do not go underneath a loaded raised bed under ANY circumstances.



Do not go underneath an unloaded raised bed unless the safety props are properly positioned.



Do not go underneath a truck with engine running.



Do not allow controls and area around them to become cluttered with tools, cans, etc.

Do not use hands or other body parts to check for hydraulic leaks.

Do not leave truck unattended with bed raised.

Do not allow personnel to ride in or on the bed.

Do not load the equipment beyond the GVW rating of the vehicle or the hoist rating.

Do not operate the hoist on an unlevel or soft surface.

Do not operate the hoist **UNDER POWER LINES!!**

Do not raise the hoist when vehicle is in motion.

Do not move a vehicle with a raised hoist.

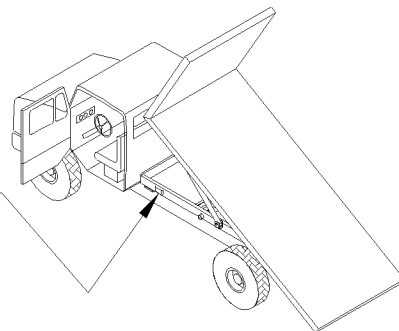
Be sure to.....

- * Follow all Federal, State, Local regulations pertaining to this equipment.
- * Keep unit properly maintained and serviced.
- * Understand and follow all safety decals and keep them in good condition.
- * Check hydraulic oil level weekly.
 - * For PTO driven pumps use HD 32 hydraulic oil.
 - * For electric driven pumps use ATF, automatic transmission fluid.
- * Add correct hydraulic oil to reservoir as needed.
- * Use EP-3 grease for all grease fittings.
- * Lubricate hoist and rear hinge assembly every 90 to 180 days depending on useage. (See MP50077)
- * Check all bolts, welds, electrical connections frequently.

When calling for Parts/Service Be Sure To Have....

Hoist: model number _____
serial number _____

Serial Plate Location



HOIST OPERATION

To Operate Hoist:

- (1) Engage PTO per PTO operation instructions.
- (2) The pump/hoist control should be in the neutral or “hold” position.
- (3) For a manual control - pull to raise, push to lower.
NOTE: Manual push/pull controls require a 1/2 inch mounting hole.
- (4) When bed raises to desired height, push the pump/hoist controls to the center neutral or “hold” position. This will stop bed movement up or down.
- (5) To lower bed - push pump/hoist control.
- (6) Disengage PTO.

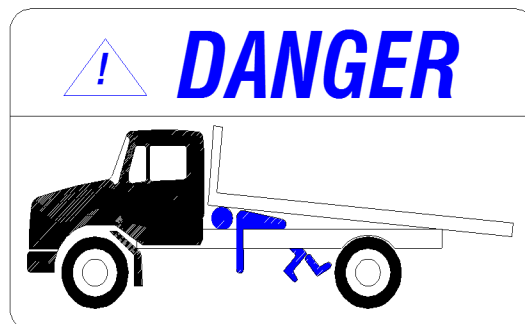
INSTALLATION INSTRUCTIONS REFER TO MP50074

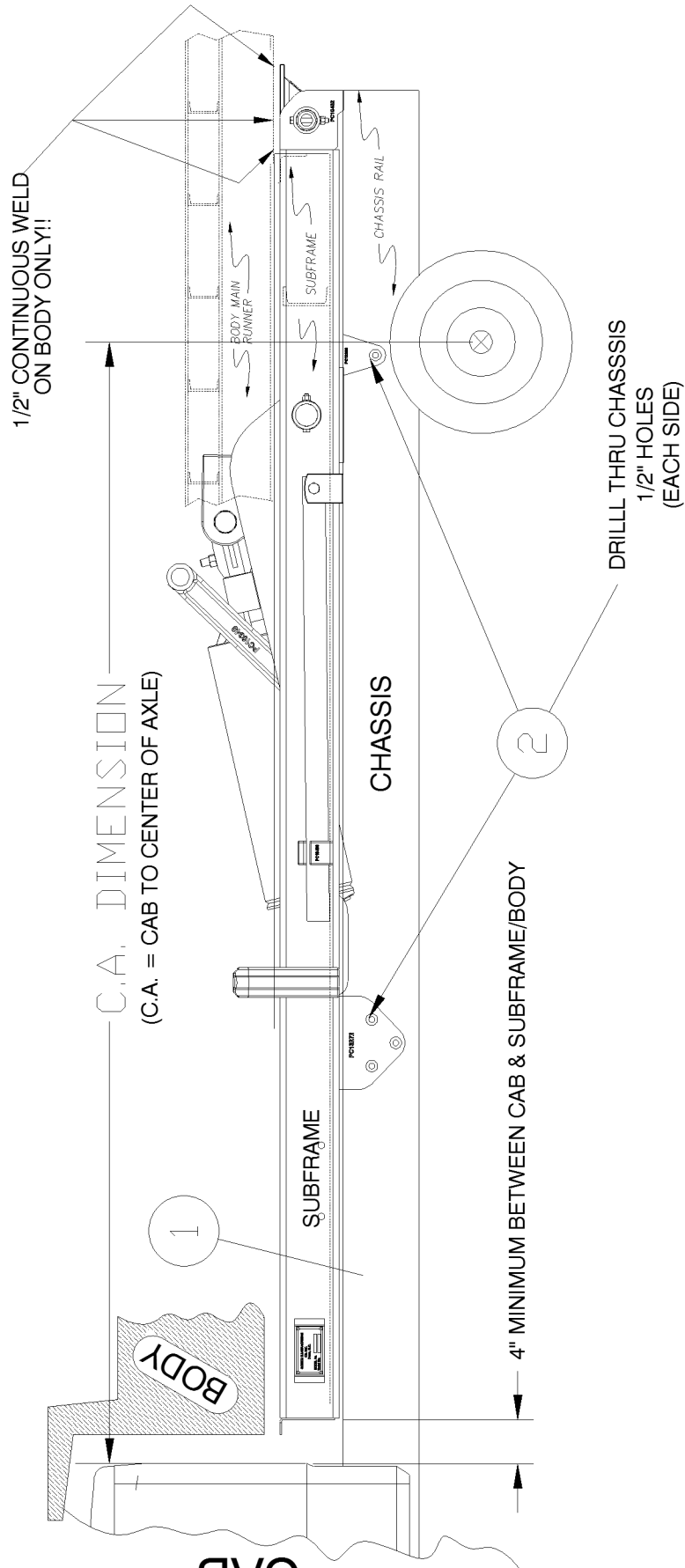
- STEP #1 SET SUB FRAME ON CHASSIS 4" FROM CAB.
(NOTE: MAKE SURE THERE ARE NO OBSTRUCTIONS (MUFFLER ETC.)
- STEP #2 DRILL (8) 1/2" HOLES THRU CHASSIS AND INSTALL HARDWARE.
(EACH SIDE)
- STEP #3 DRILL (2) 5/8" HOLES THRU CHASSIS AND INSTALL 5/8" x 2-1/2" BOLT.
(EACH SIDE)
- STEP #4 REMOVE EXCESS CHASSIS.
- STEP #5 INSTALL PUMP CABLE ASSEMBLY IN CAB OF TRUCK. THIS REQUIRES A
1/2" HOLE DRILLED THRU CAB FLOOR. (NOTE: CONTROL MUST MOUNTED
IN FLOOR DUE TO CABLE LENGTH)
- STEP #6 MOUNT HYDRAULIC PUMP TO PTO. BEFORE MOUNTING, CHECK ROTA-
TION OF PUMP. IF PUMP HAS A ROTATION THAT NEEDS TO BE REVERSED
SEE MP50078 - PROCEDURES TO REVERSE C102 PUMPS ROTATION. IF
APPLICATION CALLS FOR A P22 PUMP SEE NOTE ON PD40030 FOR
FURTHER INSTRUCTIONS.
- STEP #7 INSTALL RESERVOIR TANK IN FRONT OF LOWER BUNK FOR A C102 PUMP
APPLICATION AS INDICATED ON MP50077.
FOR A P22 PUMP APPLICATION, TWO THINGS NEED TO BE CONSIDERED:
#1 - REQUIRES A SP4 VALVE & VALVE MOUNTING BRACKET & A
CABLE SUPPORT BRACKET. (SEE MP50079)
#2 - RESERVOIR MOUNTING. SP4 BRACKET IS TO BE MOUNTED IN
SUCH A WAY THAT THE PORTS ARE ACCESSIBLE AND THE
CABLE CONTROLS OPERATE FREELY. AFTER DETERMINING
WHERE THE SP4 VALVE MOUNTING BRACKET WILL BE
MOUNTED, INSTALL RESERVOIR. (SEE MP50077)
- STEP #8 PLUMB HYDRAULICS PER PLUMBING DIAGRAM:
PD40029 - SINGLE ACTING CYLINDERS W/ C102 PUMP
PD40030 - DOUBLE ACTING CYLINDERS W/ P22 PUMP
- STEP #9 AFTER HYDRAULIC CONNECTIONS ARE COMPLETED AND CABLE
ASSEMBLY INSTALLED, FILL RESERVOIR WITH OIL.

INSTALLATION INSTRUCTIONS CONTINUED

- STEP #10 SET BODY. THERE ARE 2 METHODS.
- #1 FOR A SINGLE ACTING ASSEMBLY - WITH HOIST RAISED SUSPEND BODY OVER SUBFRAME A MINIMUM OF 4" AWAY FROM CAB, AND LOWER BODY DOWN LOW ENOUGH TO INSTALL UPPER LIFT ARM PINS TO BODYS UPPER BUNK. (SEE MP50077 ITEM 1) AFTER INSTALLATION OF LIFT ARM PINS AND COTTER PINS, LOWER HOIST AND BODY ONTO CHASSIS MAKING SURE CYLINDER IS FULLY RETRACTED. BODY SHOULD BE EVEN WITH FRONT SUBFRAME RAILS. WELD REAR HINGE FLIPPERS SECURELY TO BODY.
- #2 FOR A DOUBLE ACTING ASSEMBLY - RAISE HOIST AND SUSPEND BODY OVER SUBFRAME A MINIMUM OF 4" AWAY FROM CAB, AND LOWER BODY DOWN LOW ENOUGH TO INSTALL UPPER LIFT ARM PINS TO BODYS UPPER BUNK. (SEE MP50077 ITEM 1) AFTER INSTALLATION OF LIFT ARM PINS AND COTTER PINS, WHILE LOWERING BODY ONTO CHASSIS AND AT THE SAME TIME USING HYDRAULIC POWER, BOTTOM OUT CYLINDER TO PULL SLACK OUT OF HOIST. SECURELY WELD REAR HINGE FLIPPERS TO BODY.
- CAUTION - IF SLACK IS NOT REMOVED DAMAGE TO HOIST/BODY COULD OCCUR!!!**
- STEP #11 INSTALL SAFETY PROP CUPS ON BODY IN SUCH A MANNER THAT THE PROP IS ANGLED SLIGHTLY TO THE REAR. (SEE MP50080)
- STEP #12 REINSPECT ALL WELDS, CHECK THAT ALL HARDWARE IS SECURE, AND PLUMBING CONNECTION FOR LEAKS. (REPAIR AS NECESSARY)
- STEP #13 GREASE ALL PIVOT POINTS AND GREASE FITTINGS. (SEE MP50077)

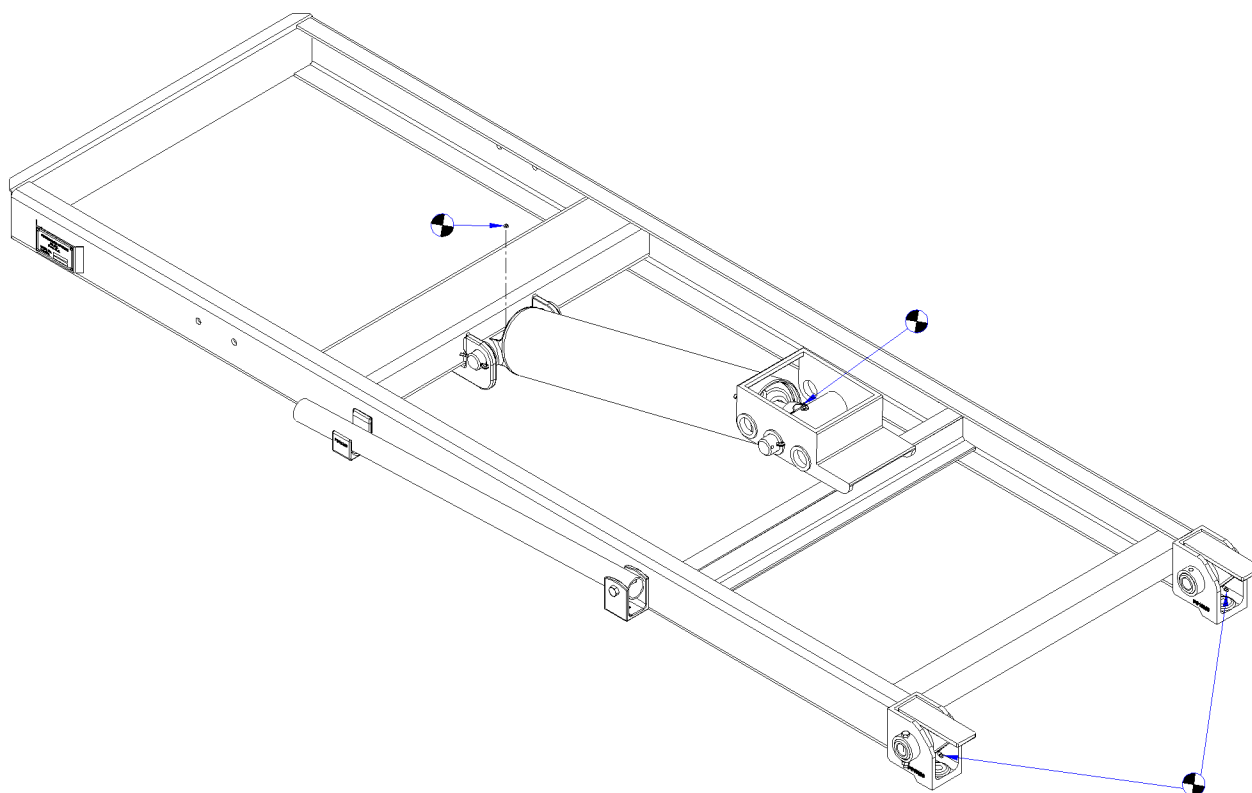
NOTE: NEVER WORK ON A RAISED EMPTY BODY WITHOUT SAFETY PROPS IN PLACE!!!






CAB
10

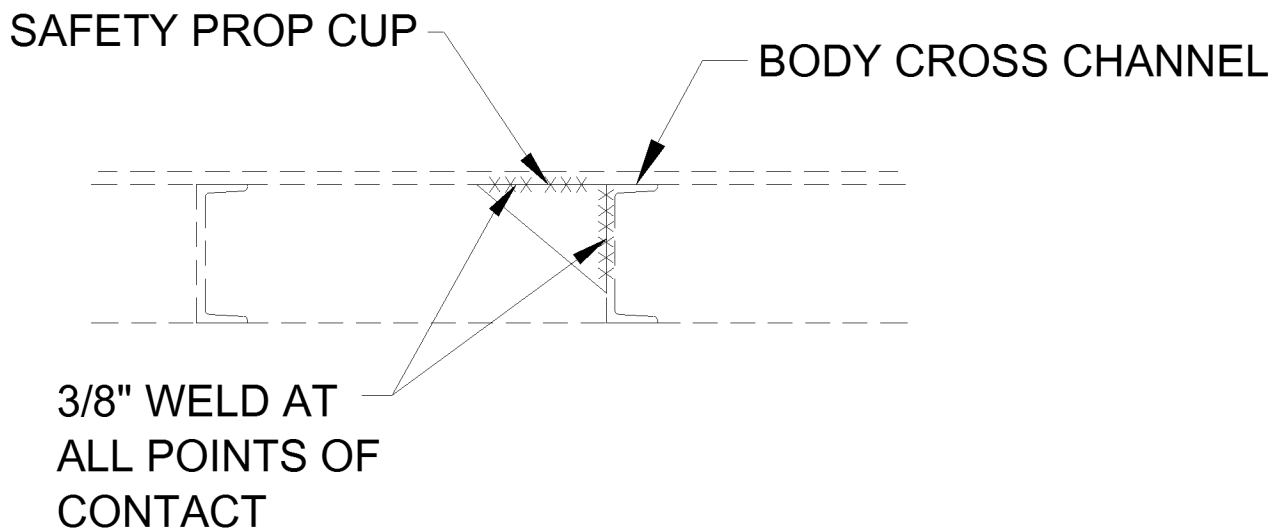
C.A. DIMENSIONS (CAB TO CENTER OF AXLE)		
C.A. DIMENSION	72"	84"
BODY LENGTH	9'	10'



 - INDICATES GREASE FITTING LOCATIONS THAT MUST BE LUBRICATED DEPENDING ON USAGE, LOAD, ENVIRONMENT AND CLIMATE. LUBRICATE ALL PIVOT POINTS USING EP-2 CHASSIS GREASE OR EQUAL.

* Grease hoist and rear hinge assembly each time truck is serviced.

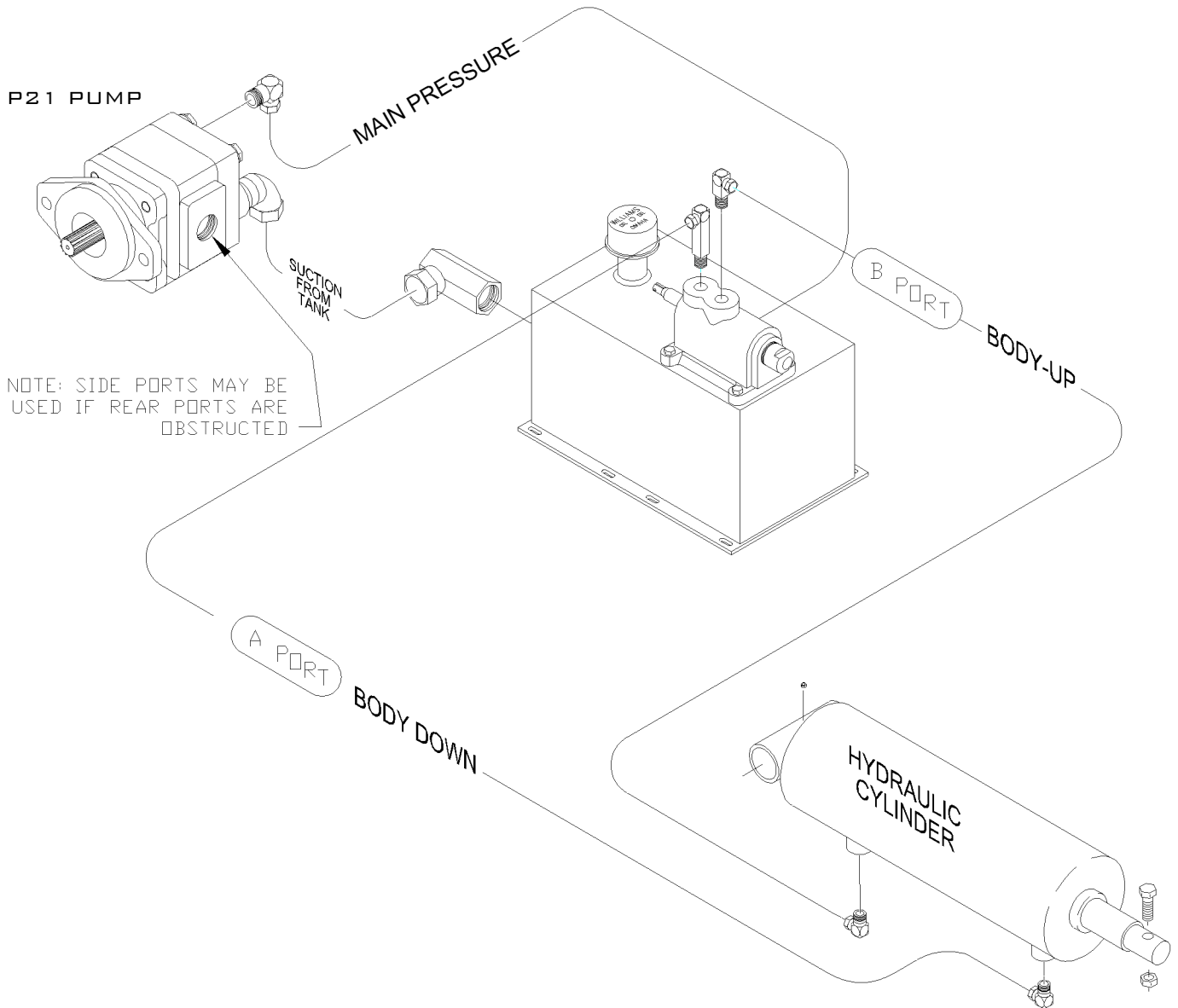
SAFETY PROP CUP INSTALLATION

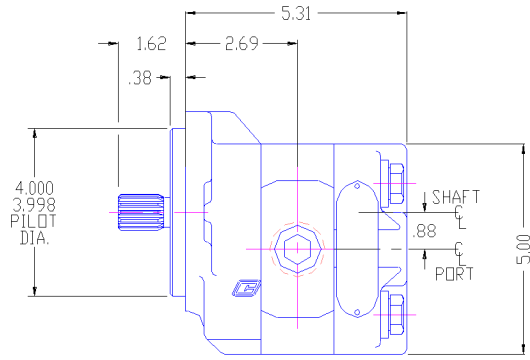


LOCATE SAFETY PROP CUPS ON BODY MAIN RUNNER SO THAT THE SAFETY PROP IS ANGLED SLIGHTLY TO THE REAR. ALSO, BE SURE CUPS ARE SUPPORTED BY A BODY CROSS CHANNEL.

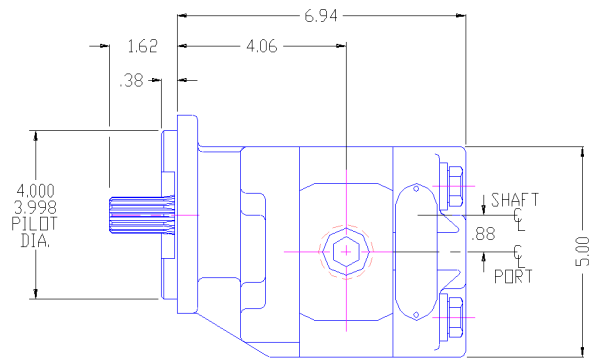
NOTE:

WHEN PLUMBING PUMP BE SURE TO USE THE PROPER PORT.
IF YOU ARE NOT SURE WHICH PORT IS SUCTION, & WHICH
IS MAIN PRESSURE, LEAVE SHIPPING PLUGS IN PORTS,
AND OPERATE PUMP NO LONGER THAN 3 SECONDS.
THIS WILL POP OUT THE MAIN PRESSURE SHIPPING PLUG.
BE SURE IT RUNS NO LONGER THAN 3 SECONDS, OR PERMANENT
DAMAGE TO PUMP MAY OCCUR!!

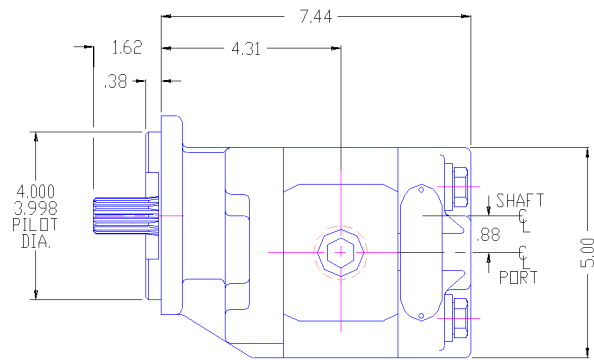




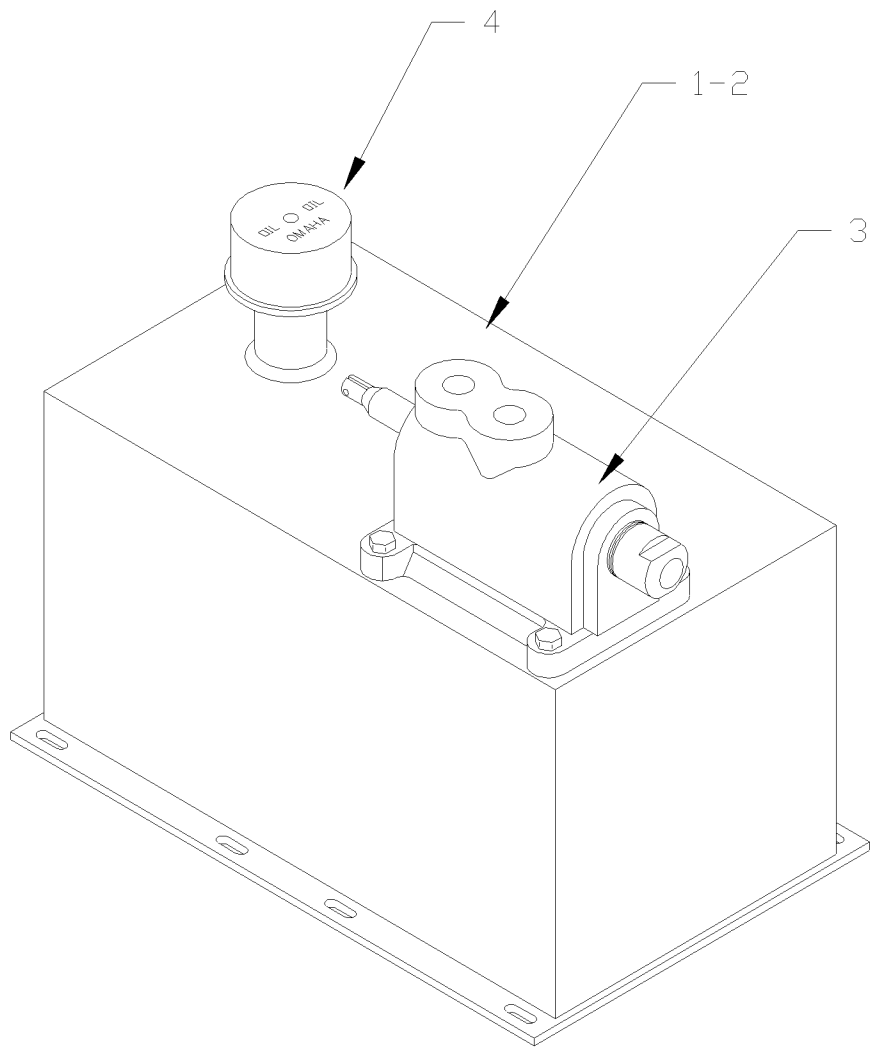
P21 PUMP



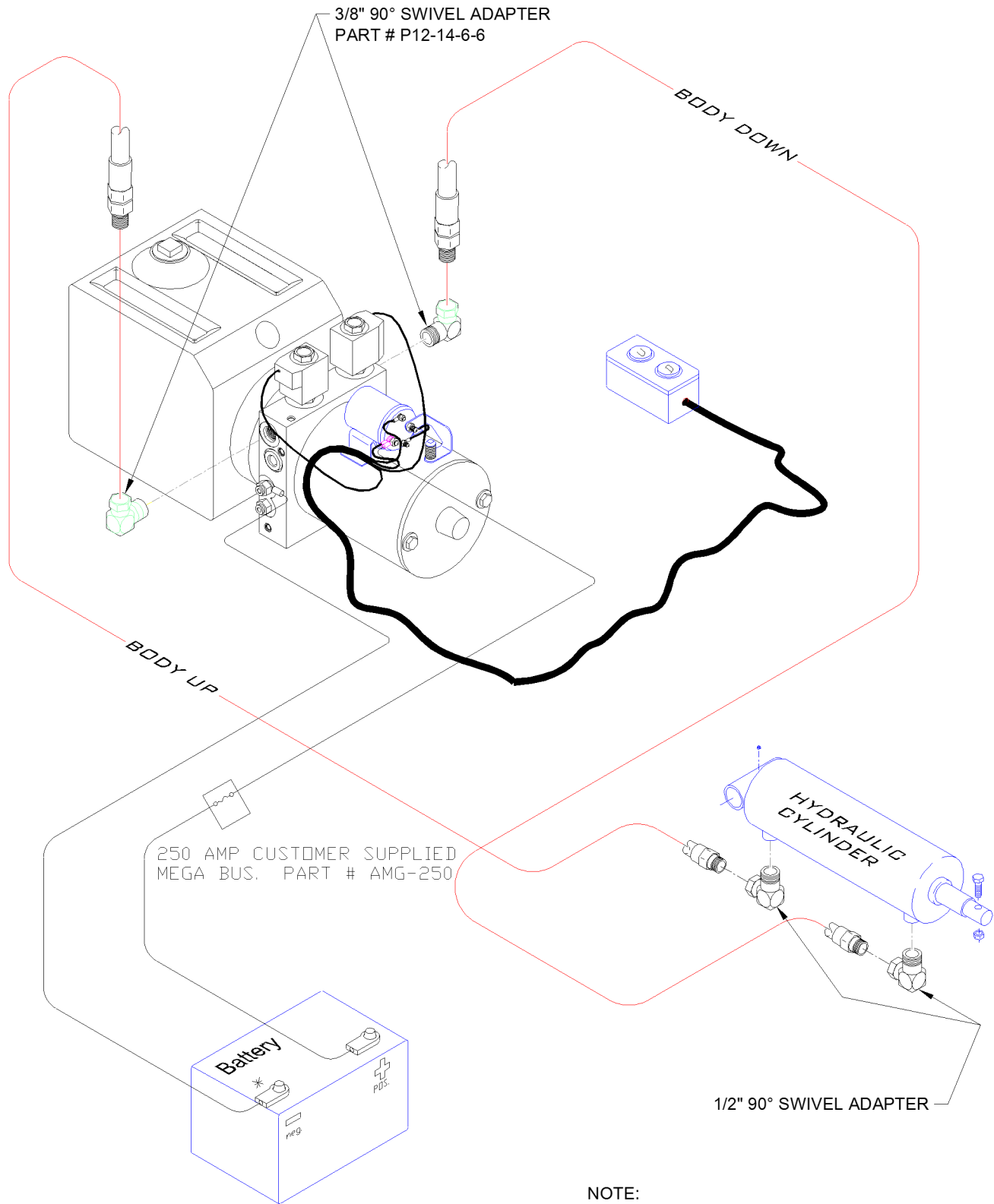
P22 PUMP



P23 PUMP



NO.	PART NUMBER	QTY.	DESCRIPTION
1	PW16-8CR-15QT	1	15 QUART RESERVOIR
2	PW16-8CR-21QT	1	21 QUART RESERVOIR
3	P8WCR	1	HYDRAULIC VALVE
4	P10241	1	CAP



3/8" 90° SWIVEL ADAPTER
PART # P12-14-6-6

BODY DOWN

BODY UP

250 AMP CUSTOMER SUPPLIED
MEGA BUS. PART # AMG-250

HYDRAULIC
CYLINDER

1/2" 90° SWIVEL ADAPTER

Battery

POS

NEG

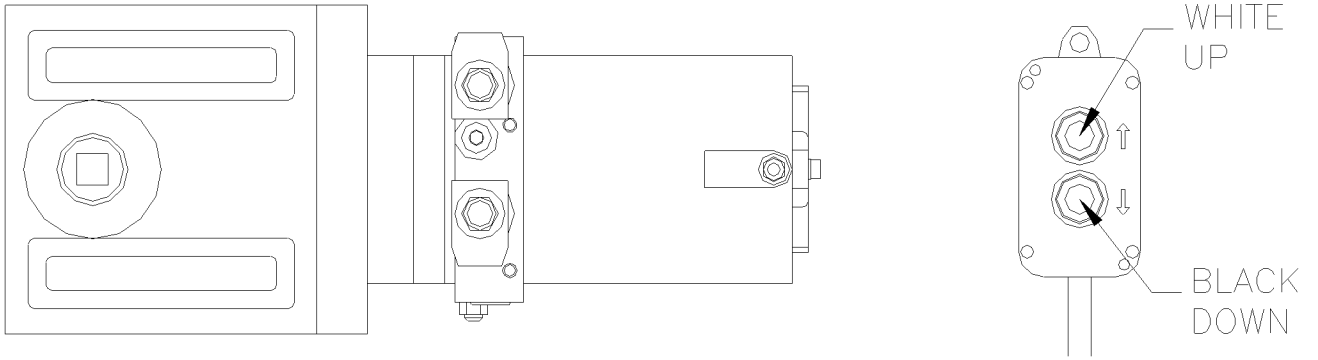
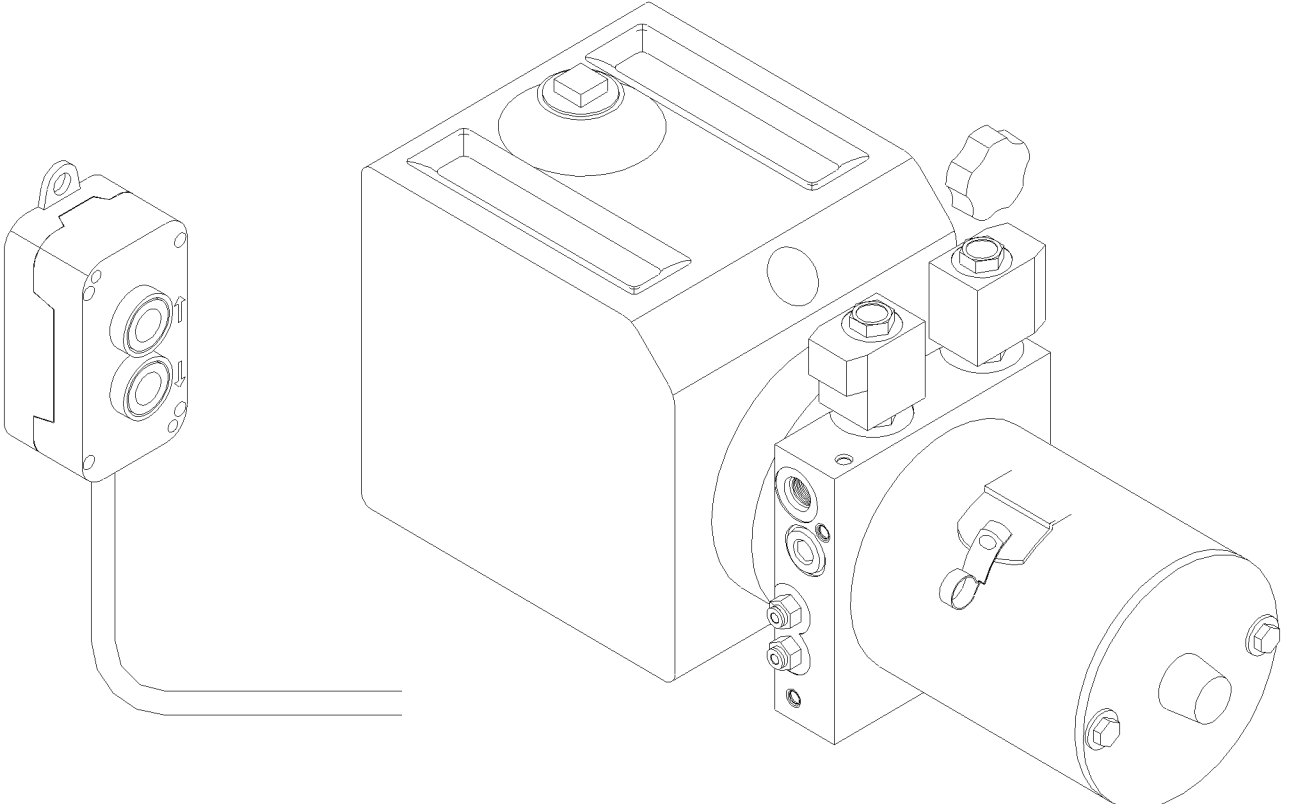
NOTE:
HYDRAULIC PORT FITTINGS ORIENTATION MAY
VARY DEPENDING ON CHASSIS TYPE.

NOTE: Ground Wire is to be ground to valve body.
DO NOT GROUND TO CHASSIS!!

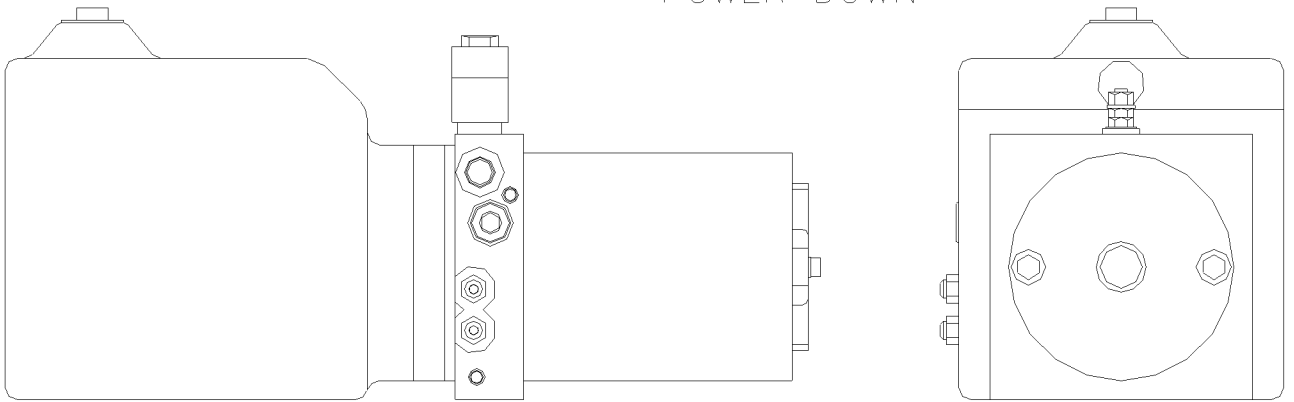
HYDRAULIC PLUMB DIAGRAM
DOUBLE ACTING ELECTRIC PUMP

GODWIN MFG. CO., INC.
DUNN, NORTH CAROLINA

PD40045



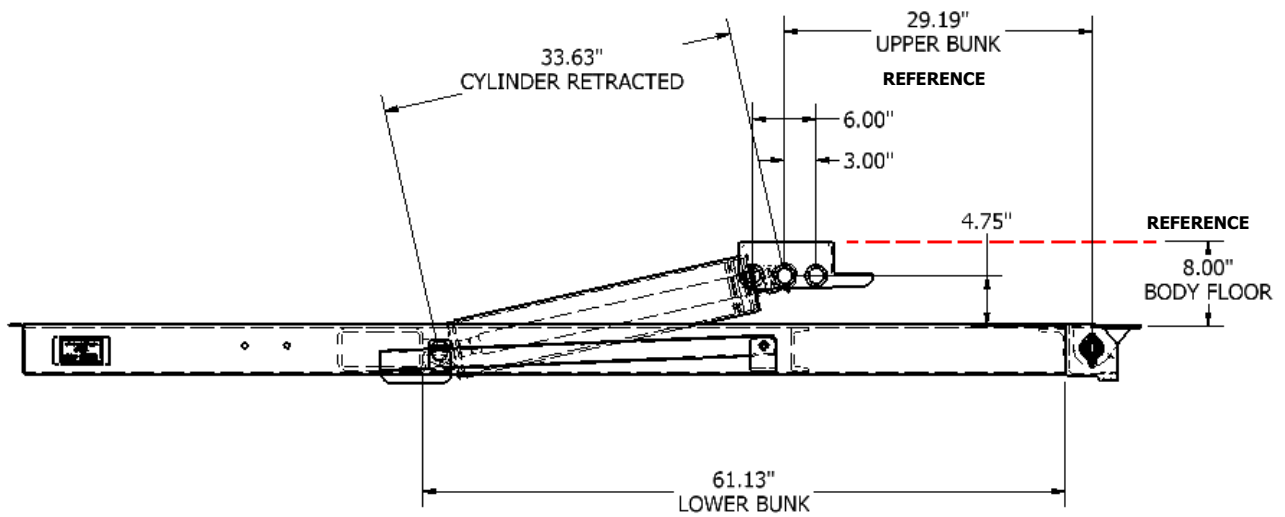
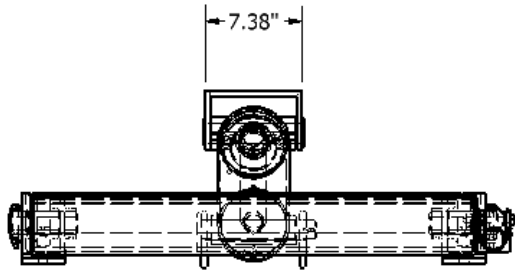
DOUBLE ACTING:
POWER UP AND
POWER DOWN



CHAMPION HOIST MODEL: 524DM, 624DM

STANDARD SUBFRAME LENGTHS (FT):

8, 9



DESIGNED FOR TRUCKS WITH 10,000 TO 14,500 GVW

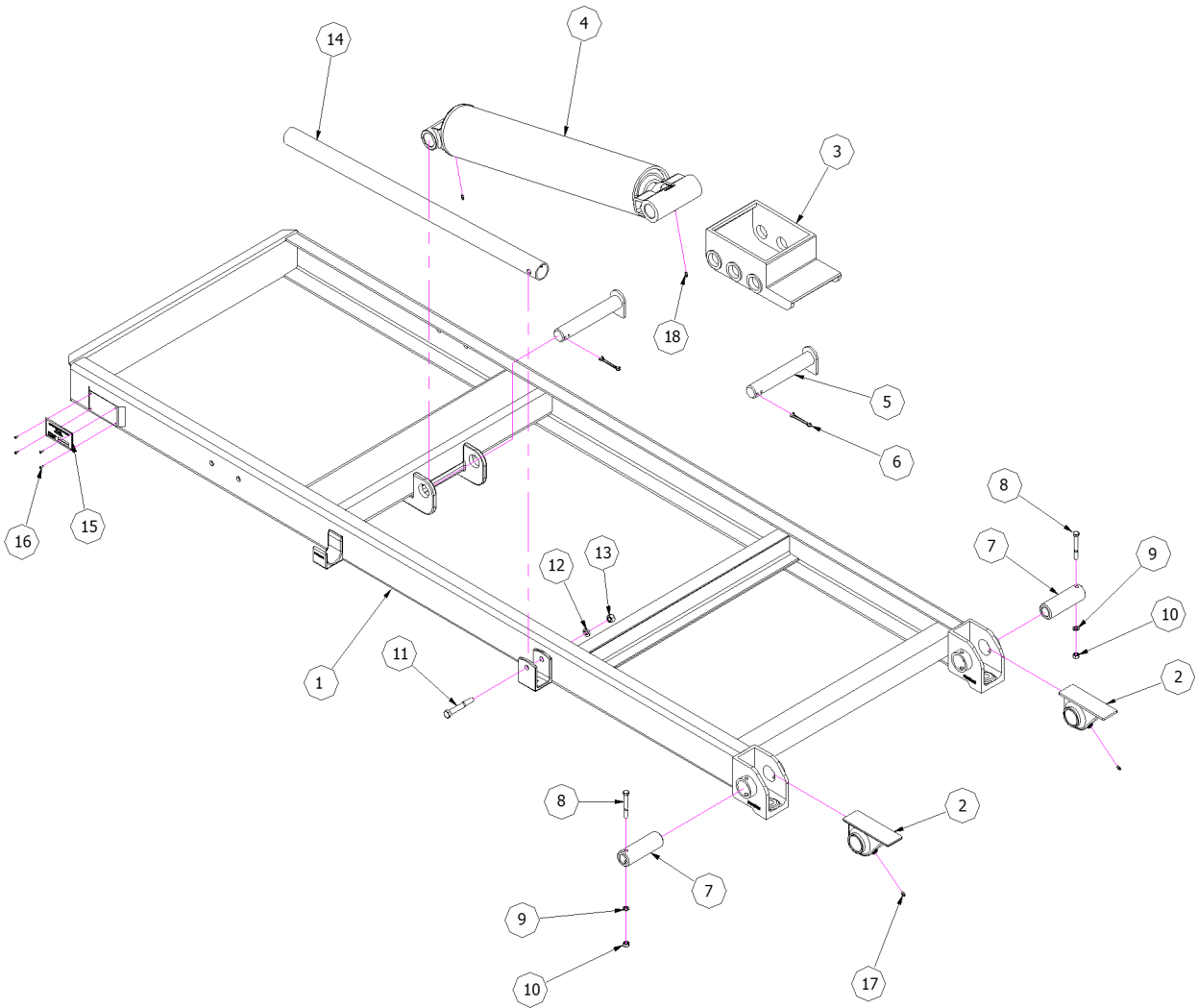
CHAMPION

Hoist and Equipment

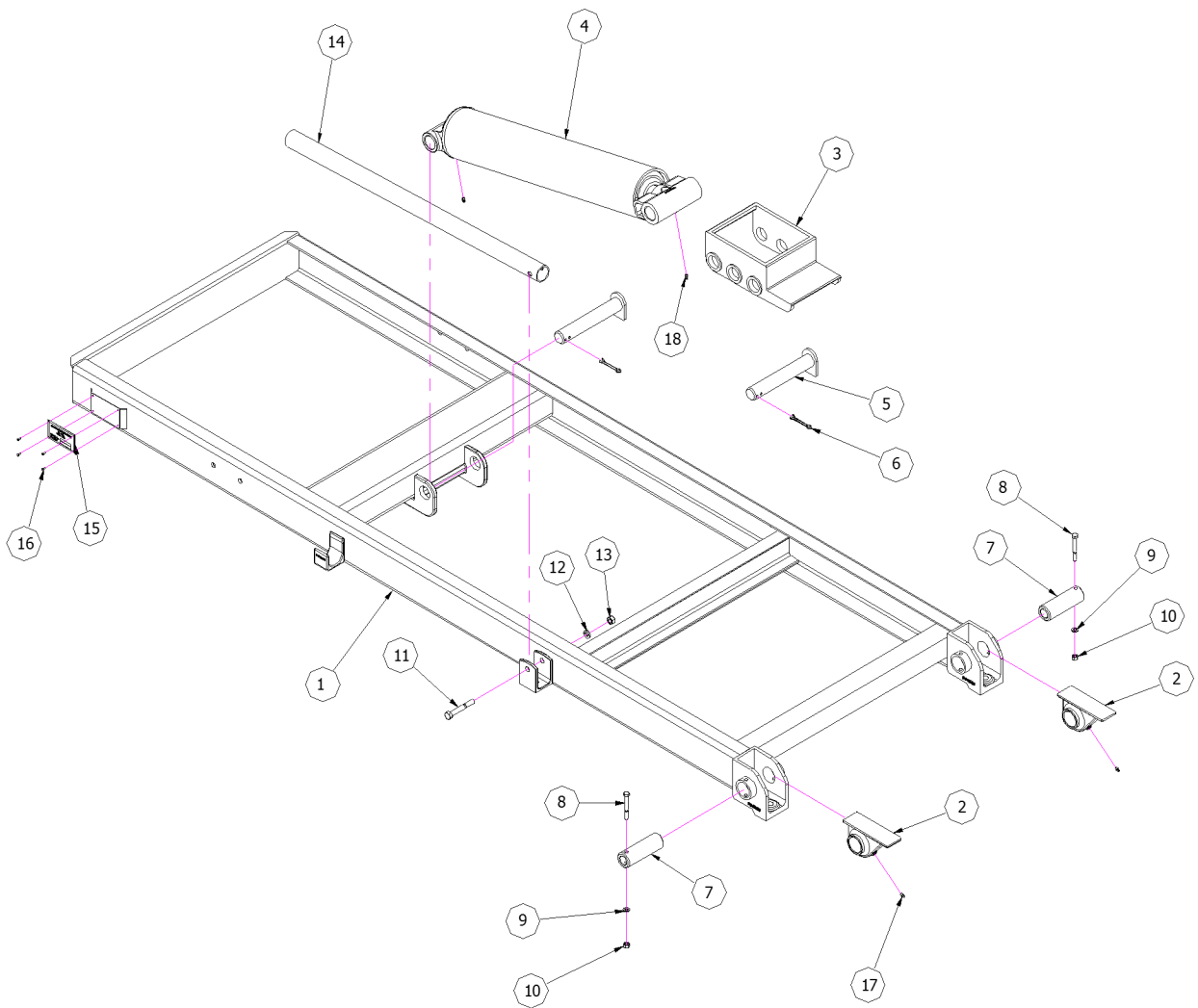
Dunn, North Carolin, U.S.A.

910 - 897 - 4995

Fax 910 - 897 - 6822



Parts List			
ITEM	QTY	PART NUMBER	DESCRIPTION
1	1	W13436	WELDMENT SUBFRAME
2	2	PC10636	REAR HINGE BLOCK
3	1	PC10749	UPPER LIFT POINT
4	1	524CYLINDER	CYLINDER, UNDERBODY
5	2	PC10560	PIN, LOWER AND UPPER BUNK
6	2	125-260	COTTER PIN, 1/4 X 3
7	2	PC10816	PIN, REAR HINGE
8	2	102-213-A1	HEX BOLT, 3/8-16 UNC X 3
9	2	118-3-A1	LOCK WASHER, 3/8
10	1	116-3-A1	HEX HUT, 3/8
11	1	102-415-A1	HEX BOLT, 1/2-13 UNC X 3 1/2 GR8
12	1	118-5-A1	LOCK WASHER, 1/2
13	1	116-5-A1	HEX NUT, 1/2-13 UNC
14	1	SM13033	SAFETY STAND
15	1	P10100	SERIAL PLATE
16	1	PAAP43	RIVET
17	2	PT7608	GREASE FITTING
18	2	P853	GREASE FITTING



Parts List			
ITEM	QTY	PART NUMBER	DESCRIPTION
1	1	W13436	WELDMENT SUBFRAME
2	2	PC10636	REAR HINGE BLOCK
3	1	PC10749	UPPER LIFT POINT
4	1	624CYLINDER	CYLINDER, UNDERBODY
5	2	PC10560	PIN, LOWER AND UPPER BUNK
6	2	125-260	COTTER PIN, 1/4 X 3
7	2	PC10816	PIN, REAR HINGE
8	2	102-213-A1	HEX BOLT, 3/8-16 UNC X 3
9	2	118-3-A1	LOCK WASHER, 3/8
10	1	116-3-A1	HEX HUT, 3/8
11	1	102-415-A1	HEX BOLT, 1/2-13 UNC X 3 1/2 GR8
12	1	118-5-A1	LOCK WASHER, 1/2
13	1	116-5-A1	HEX NUT, 1/2-13 UNC
14	1	SM13033	SAFETY STAND
15	1	P10100	SERIAL PLATE
16	1	PAAP43	RIVET
17	2	PT7608	GREASE FITTING
18	2	P853	GREASE FITTING