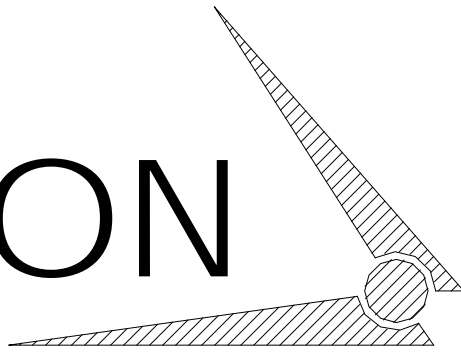


# CHAMPION

Hoist and Equipment

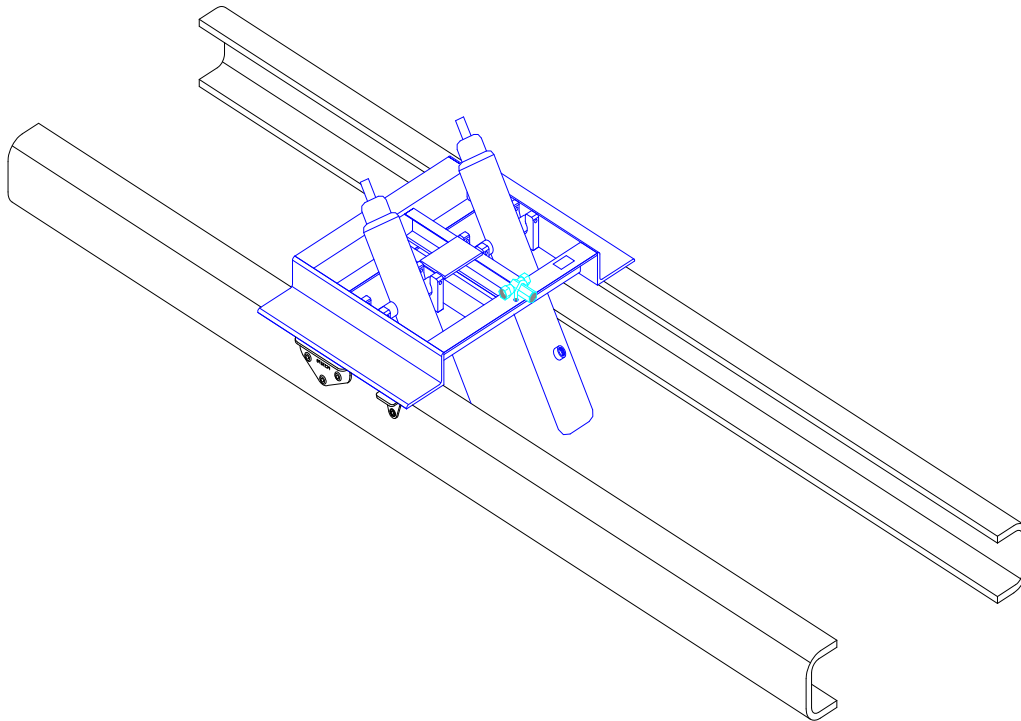


AN AFFILIATE OF

The **Godwin**  
 **Group**

200 CHAMPION DRIVE  
DUNN, NC. 28334  
(910) 897-4995 FAX: (910) 897-7306

## TWIN TELESCOPIC HOIST



Operation & Installation Manual

***CHAMPION HOIST & EQUIPMENT***

200 Champion Drive

Dunn, N.C. 28334

800-649-4995

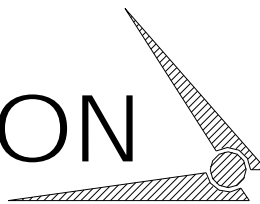
9/2010

# TWIN TELESCOPIC HOIST

## Table of Contents

Page 4	Service Information
Page 5-6	Operations and Service Do's & Don'ts (SAFTY INFORMATION)
Page 7	Hoist Operation Instructions
Page 8-10	Champion Subframe Hoist Installation Procedures
Page 11-12	Subframe Installation Details
Page 13	Hydraulic Reservoir Tank Installation
Page 14	Safety Prop Cup Installation
Page 15	Upper Bunk Detail
Page 16	Hinge Detail
Page 17	Instructions to Reverse a C102 Pumps Rotation
Page 18	Hinge Lube Points
Page 19-20	Hydraulic Plumbing Diagram
Page 21	Stop Cable Installation

**CHAMPION**  
Hoist and Equipment



# CHAMPION HOIST AND EQUIPMENT

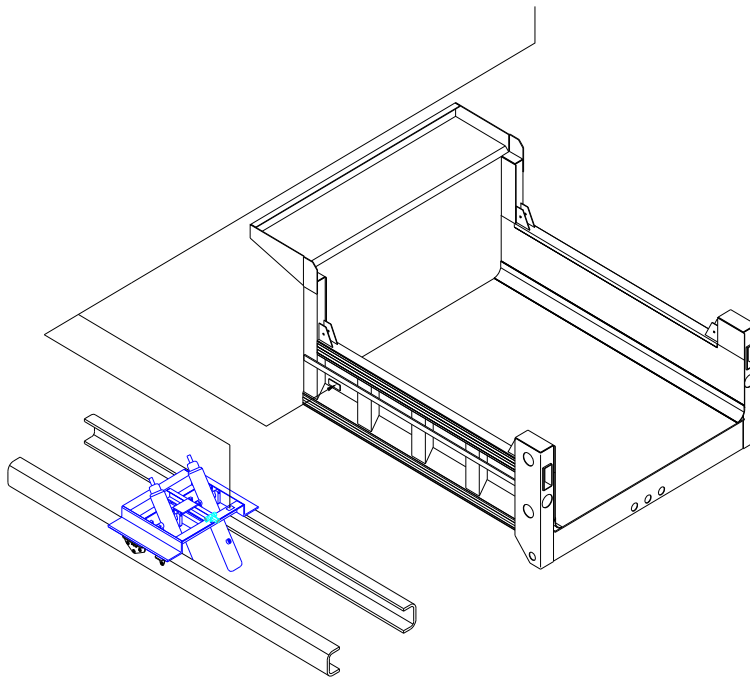
200 CHAMPION DRIVE  
DUNN, N.C. 28334

Phone# (910) -897-4995

fax# (910) -897-7306

When calling, specify (parts) - (service) - (sales)  
have the following information on hand for  
faster service: body model # & serial #  
hoist model # & serial #  
year, make, type of truck.

this information is provided as indicated

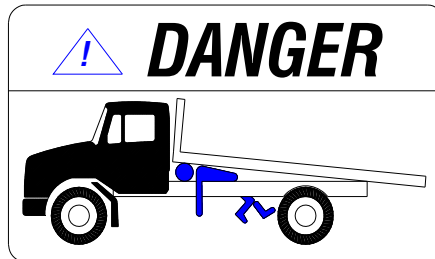


## Operations and Service Manual

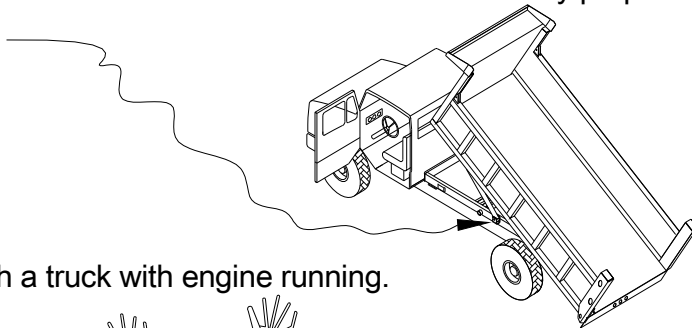
Do not operate this equipment without fully reading and understanding this manual.

Do not allow unauthorized personnel to operate this equipment.

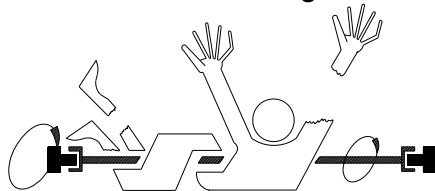
Do not go underneath a loaded raised bed under ANY circumstances.



Do not go underneath an unloaded raised bed unless the safety props are properly positioned.



Do not go underneath a truck with engine running.



Do not allow controls and area around them to become cluttered with tools, cans, etc.

Do not use hands or other body parts to check for hydraulic leaks.

Do not leave truck unattended with bed raised.

Do not allow personnel to ride in or on the bed.

Do not load the equipment beyond the GVW rating of the vehicle or the hoist rating.

Do not operate the hoist on an unlevel or soft surface.

Do not operate the hoist **UNDER POWER LINES!!**

Do not raise the hoist when vehicle is in motion.

Do not move a vehicle with a raised hoist.

Be sure to.....

- \* Follow all Federal, State, Local regulations pertaining to this equipment.
- \* Keep unit properly maintained and serviced.
- \* Understand and follow all safety decals and keep them in good condition.
- \* Check hydraulic oil level each time truck is serviced.
- \* Add correct hydraulic oil to reservoir as needed.

**PTO PUMP APPLICATIONS**

***CAUTION***  
***USE HYDRAULIC OIL ONLY!***  
***TEXACO RANDO HD 32***  
***EXXON NUTO HD 32***  
***SHELL TELLUS HD 32***  
***OR COMPARABLE***

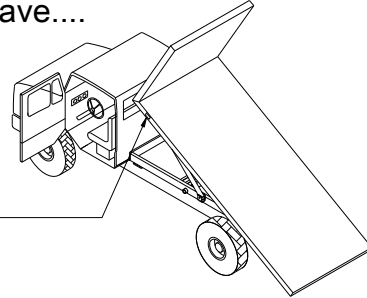
- \* Grease hoist and rear hinge assembly each time truck is serviced.

---

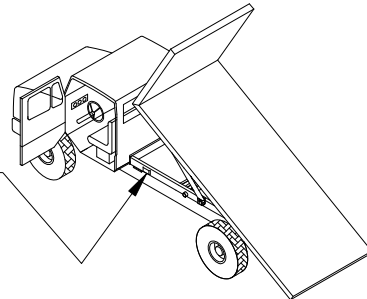
---

When calling for Parts/Service Be Sure To Have....

Flatbed: model number \_\_\_\_\_  
serial number \_\_\_\_\_  
Serial Plate Location \_\_\_\_\_



Hoist: model number \_\_\_\_\_  
serial number \_\_\_\_\_  
Serial Plate Location \_\_\_\_\_



# HOIST OPERATION

To Operate Hoist:

- (1) Engage PTO per PTO operation instructions.
- (2) The pump/hoist control should be in the neutral or “hold” position.
- (3) For a manual control - pull to raise, push to lower.  
NOTE: Manual push/pull controls require a 1/2 inch mounting hole.
- (4) When bed raises to desired height, push the pump/hoist controls to the center neutral or “hold” position. This will stop bed movement up or down.
- (5) To lower bed - push pump/hoist control.
- (6) Disengage PTO.

## GODWIN MANUFACTURING TWIN TELESCOPIC INSTALLATION INSTRUCTIONS

- STEP #1 LOCATE AND MARK CENTERLINE LOCATION OF REAR HINGE. SEE MP50101. HINGE LOCATION SHOULD BE FROM THE BACK OF THE CAB, BODY LENGTH MINUS OVERHANG PLUS BEHIND THE CAB CLEARANCE.
- STEP #2 AFTER MARKING CENTERLINE OF REAR HINGE, REMOVE EXCESS CHASSIS PER MP50104.
- STEP #3 AFTER REMOVING EXCESS CHASSIS, CUT A 2" DIA. HOLE IN CHASSIS AND WELD REAR HINGE INNER BRACKET TO CHASSIS AS INDICATED ON MP50104.
- STEP #4 REFER TO MP50101 DETAIL "A", AND MOUNT LOWER BUNK ONTO CHASSIS USING THE APPROPRIATE "G" DIMENSION PROVIDED IN THE LOWER LEFT CORNER OF MP50101.
- STEP #5 AFTER MOUNTING LOWER BUNK ON CHASSES, WELD LOWER BUNK MOUNTING BRACKETS TO LOWER BUNK. SEE MP50101 DETAIL "B" .
- STEP #6 AFTER BRACKETS ARE SECURELY WELDED TO LOWER BUNK, DRILL (4) 1/2" DIA. HOLES THRU MOUNTING BRACKETS AND CHASSIS AS SHOWN ON MP50101 DETAIL "B", AND INSTALL HARDWARE.
- STEP #7 MOUNT UPPER BUNK TO HYDRAULIC CYLINDER SHAFT ENDS, AND INSTALL PINS & COTTER PINS. SEE MP50102 ITEM 1 FOR PROPER ORIENTATION OF UPPER BUNK.
- STEP #8 INSTALL RESERVOIR TANK IN FRONT OF LOWER BUNK AS INDICATED ON MP50102. CUSTOMER WILL NEED TO FABRICATE RESERVOIR MOUNTING BRACKET THAT WILL BOLT SECURELY TO CHASSIS FOR MODEL #'S 4250 & 4265. MODEL #'S 4398 & 5390, REQUIRE A STANDARD 30 GA. RESERVOIR. LOCATION OF RESERVOIR WILL VARY DEPENDING ON MAKE OF THE TRUCK. SEE MP50102 BEFORE MOUNTING RESERVOIRS.
- STEP #9 MOUNT HYDRAULIC PUMP TO PTO. BEFORE MOUNTING, CHECK ROTATION OF PUMP. IF PUMP ROTATION HAS TO BE CHANGED, SEE MP50078.
- STEP #10 PLUMB HYDRAULICS PER CORRECT DIAGRAM:  
4250 & 4265 SEE PD40032  
4398 & 5390 SEE PD40033
- STEP #11 AFTER HYDRAULIC CONNECTIONS ARE COMPLETED, INSTALL CABLE ASSEMBLY IN CAB OF TRUCK. SEE PAGE 3 & MP50076 FOR MOUNTING INSTRUCTIONS.



## GODWIN MANUFACTURING TWIN TELESCOPIC INSTALLATION INSTRUCTIONS

STEP #12 FILL RESERVOIR FULL OF HYDRAULIC OIL.

STEP #13 INSTALL SAFETY PROPS & PROP CUPS IN SUCH A MANNER THAT THE PROP IS ANGLED SLIGHTLY TO THE REAR. SEE MP50054 DETAILS "A" & "B".

STEP #14 SET SPACER BLOCKS ON TOP OF CHASSIS IN SUCH A WAY THAT THEY WILL NOT INTERFERE WITH THE LOWER BUNK & RESERVOIR TANK.  
NOTE: THE SPACER BLOCKS WILL BE WELDED TO BODY MAIN RUNNERS. DO NOT WELD TO MAIN RUNNERS UNTIL UPPER BUNK IS COMPLETELY INSTALLED!! SEE MP50101 DETAIL "C" ITEM 6.

STEP #15 INSTALL REAR HINGE (FLIPPERS) ASSEMBLY.  
SEE MP50105 FOR ISOMETRIC VIEW.

STEP #16 SUSPEND BODY OVER CHASSIS APPROX. 3" AWAY FROM CAB BEFORE LOWERING. YOU WILL NEED ASSISTANCE OF 2 OR MORE PEOPLE. FOLLOW THESE INSTALLATION STEPS.

- 1ST. ONE PERSON NEEDS TO BE UNDERNEATH CHASSIS BELOW TWIN CYLINDERS. HIS FUNCTION IS TO PUSH THE CYLINDERS TOWARDS THE CAB & CHASSIS TO INSURE PROPER GROUND CLEARANCE.
- 2ND. THE SECOND PERSON SHOULD BE TO THE SIDE DIRECTLY IN FRONT OF THE UPPER BUNK. HIS FUNCTION IS TO GIVE THE 3rd PERSON (WHO IS STEERING THE BODY) DIRECTIONS TO POSITION THE BODY SO THAT THE UPPER BUNK IS BETWEEN THE CROSS SILLS. SEE MP50106.

NOTE: THE BODY MAY BE SHIFTED FORWARD AND/OR BACKWARDS IN ORDER TO LINE-UP UPPER BUNK WHILE MAINTAINING A 2-1/2" MINIMUM GAP BETWEEN CAB AND BODY.

WHEN BUNK IS PROPERLY INSTALLED, THERE SHOULD BE APPROXIMATELY 1-1/2" BETWEEN TOP OF UPPER BUNK & FLOOR OF BODY. SEE MP50106 FOR DETAILED DIMENSIONS.

HOWEVER, IF THE DISTANCE BETWEEN CAB & BODY IS NOT APPEALING, REMOVING CROSS SILL MATERIAL WILL BE REQUIRED TO INSTALL UPPER BUNK.

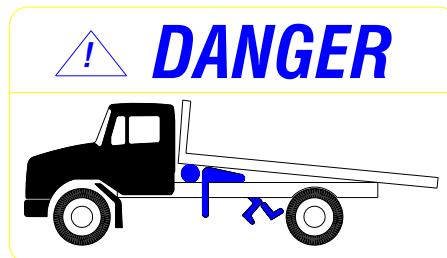
STEP #17 NOW THAT BODY IS SET ON CHASSIS, CENTER UPPER BUNK EVENLY BETWEEN BODY MAIN RUNNERS.

## CHAMPION TWIN TELESCOPIC INSTALLATION INSTRUCTIONS

- STEP #18 NOW THAT THE BODY IS SET AND THE UPPER BUNK IS IN THE PROPER POSITION, INSTALL 3/8" x 3" x 6" LG. SUPPORT BRACKET (CUSTOMER SUPPLIED) , AND WELD TO UPPER BUNK & BODY MAIN RUNNERS SECURELY. SEE MP50103, ITEM #4.
- STEP #19 NOW INSTALL 3" x 3" x 12" LG. ANGLE SUPPLIED BY GODWIN MFG. IN SUCH A MANNER THAT THERE ARE 3 POINTS OF CONTACT. WELD SECURELY AS DETAILED ON MP50103, ITEM #2.
- STEP #20 NOW THAT THE UPPER BUNK IS SECURELY ATTACHED TO THE BODY, WELD REAR HINGE FLIPPERS TO BODY MAIN RUNNERS AS INDICATED ON MP50101, ALSO SEE MP50105 FOR ISOMETRIC VIEW OF REAR HINGE ASSY.
- STEP #21 AFTER COMPLETING STEP #20, WELD SPACER BLOCKS ON BODY MAIN RUNNERS.
- STEP #22 AFTER COMPLETING STEP #21, RAISE BODY WITH HOIST POWER, MAKING SURE THAT THE RESERVOIR IS FULL OF OIL, UNTIL THE CYLINDERS ARE FULLY EXTENDED & SAFETY PROPS ARE IN PLACE!! OPEN THE BLEEDER VALVE ON BOTH CYLINDERS AND PURGE AIR OUT OF CYLINDERS UNTIL A STEADY STREAM OF OIL EXPELS. REFILL WITH OIL AS NEEDED. CLOSE VALVES AND LOWER BODY BACK TO CHASSIS AND REPEAT SEVERAL TIMES.

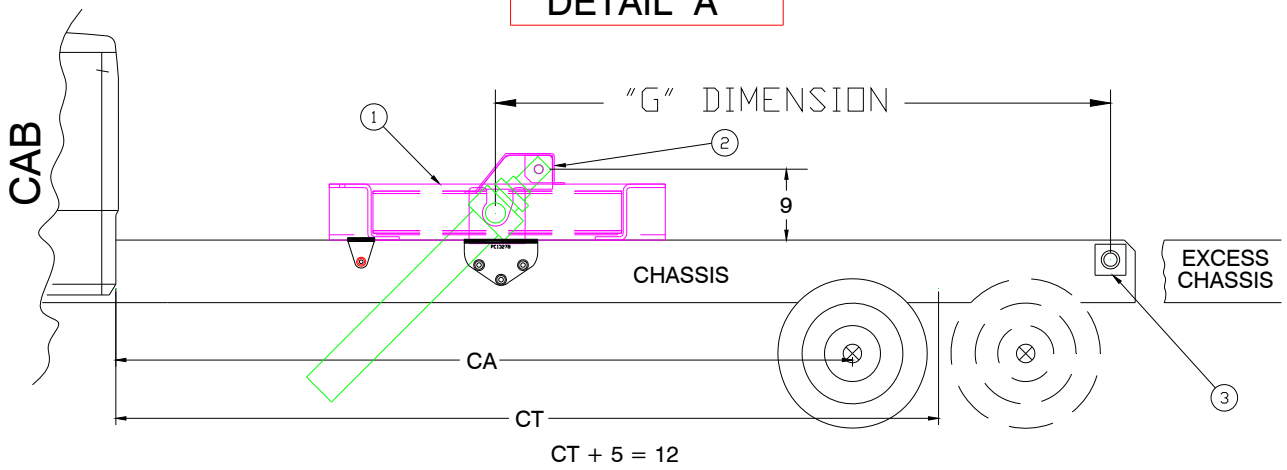
NOTE: AFTER BLEEDER VALVES ARE OPENED, THE BODY WILL DROP SLOWLY UNTIL REACHING HYDRAULIC OIL.

NOTE: NEVER WORK ON A RAISED EMPTY BODY WITHOUT SAFETY PROPS IN PLACE!!

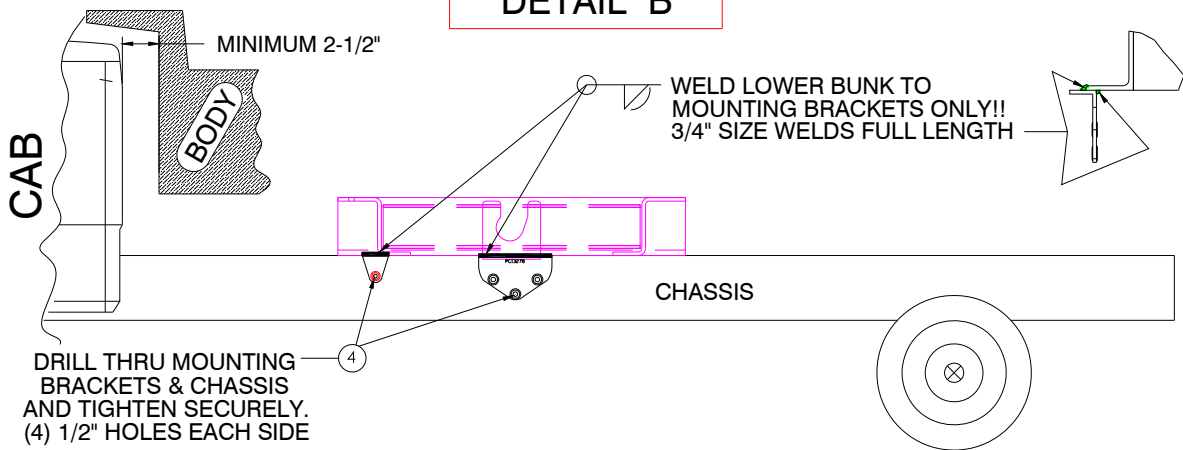


- STEP #23 AFTER COMPLETING STEP #22, INSPECT ALL WELDS & CHECK ALL HARDWARE/ PLUMBING CONNECTIONS FOR LOOSENESS &/OR LEAKS. REPAIR AS NECESSARY.
- STEP #24 AFTER COMPLETING STEP #23, INSTALL BODY STOP CABLE, SEE MP50090. INSTALL CABLE ON PUMP USING A 1/8" CABLE CLAMP AND TIGHTEN SECURELY. FABRICATE STOP BLOCK MTG. PAD & WELD SECURELY TO THE LAST BODY CROSS SILL AS INDICATED ON MP50090. MOUNT & WELD STOP BLOCK TO PAD, AFTER COMPLETING, ELEVATE BODY TO THE DESIRED HEIGHT, AND PULL CABLE THRU STOP BLOCK, TIGHTEN SET SCREW. RAISE BODY & TEST STOP CABLE ASSY. TO ENSURE IT IS WORKING PROPERLY.
- THE STOP CABLE IS A SAFETY DEVICE USED TO LIMIT BODY DUMP ANGLE AND TO PREVENT CYLINDERS FROM OVER EXTENDING.
- STEP #25 GREASE ALL PIVOT POINTS AND GREASE FITTINGS.

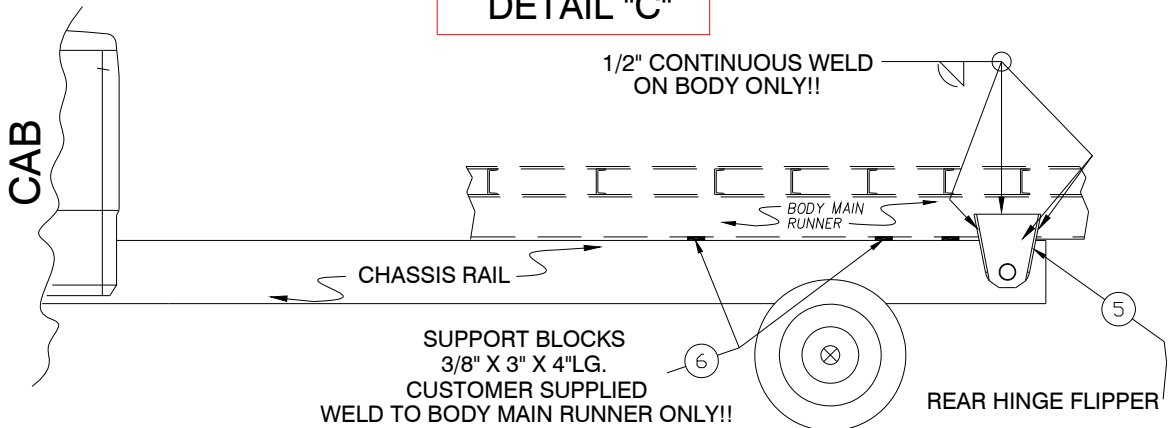
### DETAIL "A"



### DETAIL "B"



### DETAIL "C"



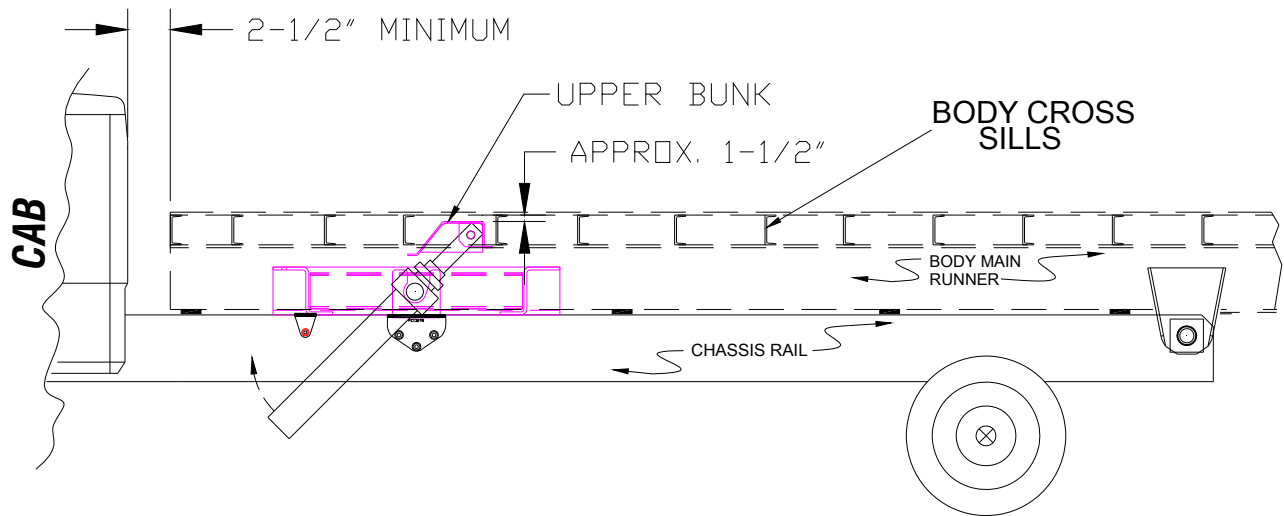
TWIN TELESCOPIC HOIST INSTALLATION DIMENSIONS  
(SEE DETAIL "A")

HOIST	CA	CT	BODY LENGTH	45° "G" DIMENSION	50° "G" DIMENSION
4250T	102"	N/A	14' SINGLE AXLE	72"	65"
4265T	120" - 126"	N/A	16' SINGLE AXLE	90"	81"
4398T	138" - 156"	N/A	18' & 20' SINGLE AXLE	124"	119"
5390T	N/A	120" - 126"	18' - 24' TANDEM AXLE	117"	106"

### TELESCOPIC HOIST INSTALLATION

CHAMPION  
Hoist and Equipment

MP50101



NOTE: CYLINDERS NEED TO BE AS HIGH AS POSSIBLE. THIS REQUIRES AT LEAST 2 PEOPLE. PUSH CYLINDERS TOWARDS CAB & CHASSIS, WHEN UPPER BUNK IS PROPERLY IN PLACE AND LEVEL, IT SHOULD BE APPROX. 1-1/2" FROM THE BODY'S FLOOR.

BODY CAN BE MOVED FORWARD & OR BACKWARDS WITHIN 1" TO CENTER UPPER BUNK BETWEEN BODY CROSS SILLS WHILE MAINTAINING A MINIMUM OF 2-1/2" AWAY FROM CAB.

DETAILED UPPER BUNK  
INSTALLATION

CHAMPION  
Hoist and Equipment

MP50106

CAB

HYDRAULIC RESERVOIR MOUNTED IN FRONT OF LOWER BUNK

1 UPPER BUNK

CHASSIS

CUSTOMER TO FABRICATE  
EXTENSION BRACKET  
AND MOUNT TO UNDER SIDE OF TO TOP LIP  
OF CHASSIS NOT ON TOP OF CHASSIS!!!!

RESERVOIR 30 GAL. STD.  
FOR MODEL #S 4398 & 5390

ISOMETRIC VIEW NOT TO SCALE  
FOR REFERENCE ONLY

TRUCK CAB

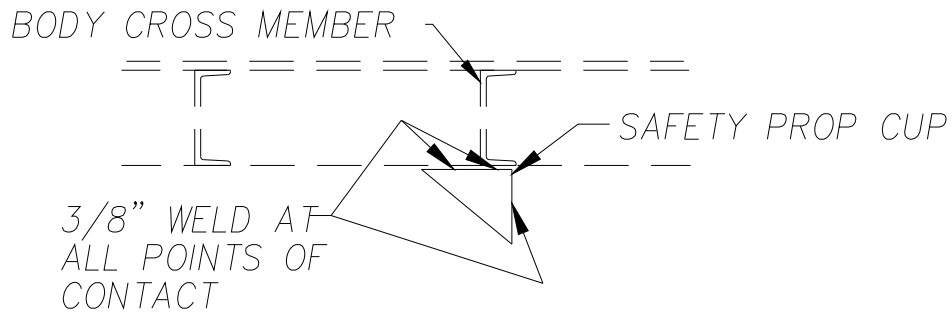
RESERVOIR 8 GAL.  
FOR MODEL #S 4250 & 4265

ISOMETRIC VIEW NOT TO SCALE  
FOR REFERENCE ONLY

TRUCK CAB

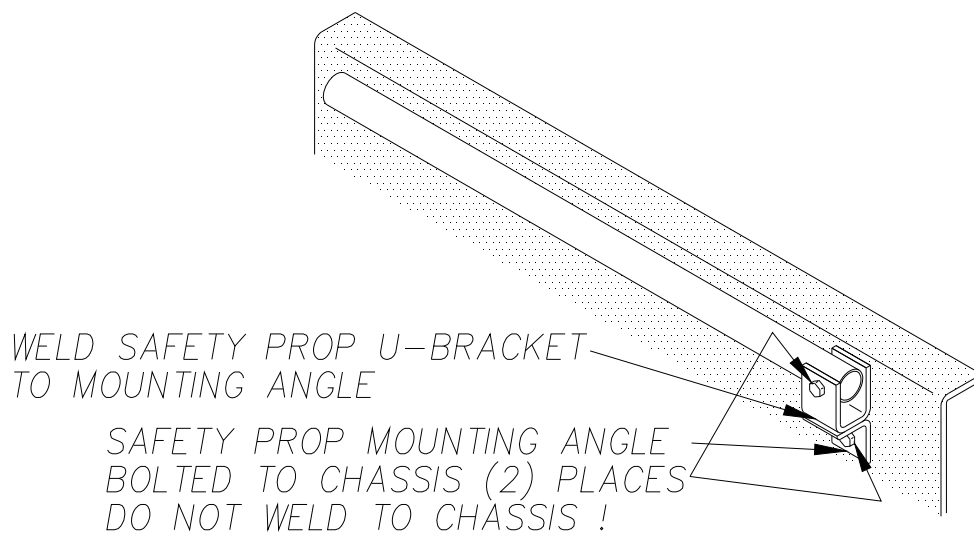
HYDRAULIC RESERVOIR  
INSTALLATION

## DETAIL "A"



LOCATE SAFETY PROP CUPS ON BODY MAIN RUNNER SO THAT THE SAFETY PROP IS ANGLED SLIGHTLY TO THE REAR. ALSO, BE SURE CUPS ARE SUPPORTED BY A BODY CROSS CHANNEL.

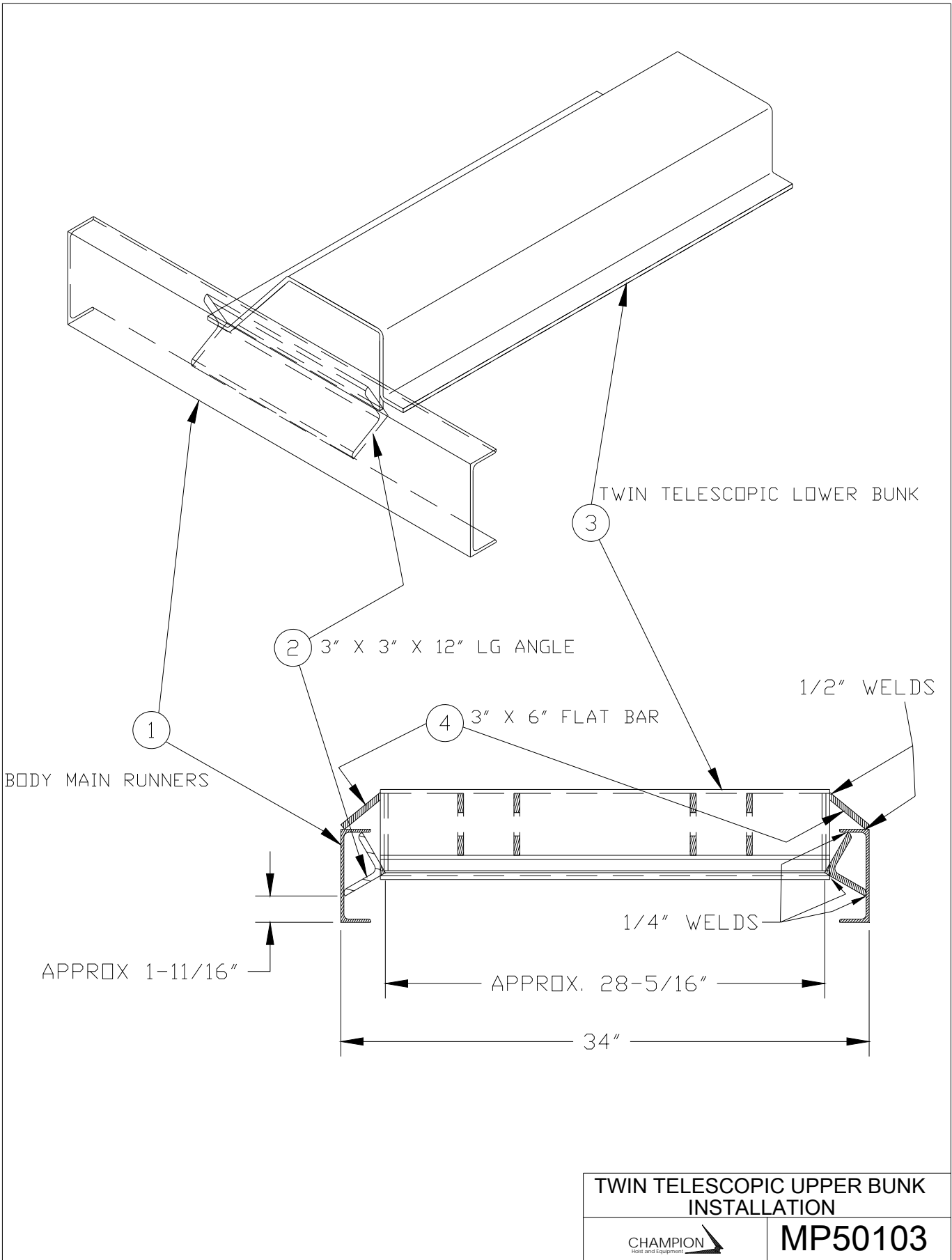
## DETAIL "B"

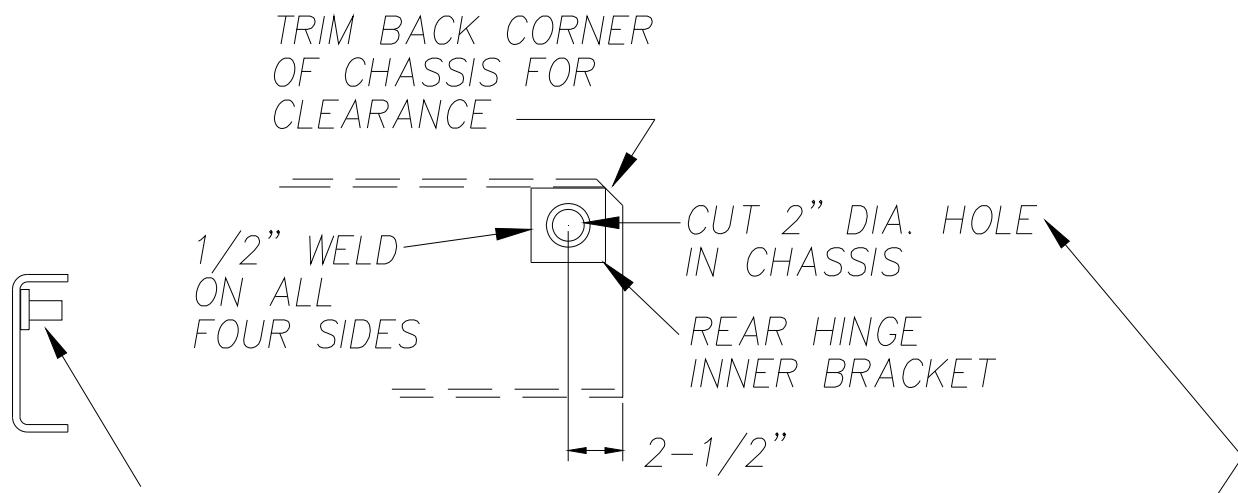


SAFETY PROP INSTALLATION

CHAMPION  
Hoist and Equipment

MP50054





NOTE: WHEN CUTTING 1-3/4" DIA. HOLE IN CHASSIS, BE SURE TO PUT THE FRAME ATTACH BRACKET ON THE INSIDE OF THE CHASSIS TO MARK THE CENTER FOR THE HOLE TO BE CUT OUT. THE REASON BEING THE BRACKET MUST FIT FLUSH WITH CHASSIS RAIL, AND NOT ON RADIOUS CORNERS OF CHASSIS.

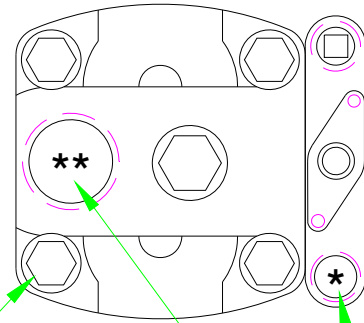
**REAR HINGE DETAIL**



**MP50104**



# INSTRUCTIONS TO REVERSE C102 PUMP ROTATION



STEP #1 SECURELY MOUNT PUMP FLANGE IN VISE  
SHAFT DOWN!

STEP #2 REMOVE (4) HEX BOLTS, WASHERS.

\*\* SUCTION PORT

STEP #3 LIFT OFF VALVE AND CENTER SECTION OF  
PUMP LEAVING FRONT COVER AND GEARS  
IN PLACE, AND ROTATE 180°.

\* CYLINDER PORT

STEP #4 LOWER CENTER SECTION AND VALVE ONTO  
FRONT COVER AND GEARS BEING CAREFUL  
NOT TO DISTURB POCKET SEALS IN TRUST  
PLATES. (IF NEEDED GLUE IN WITH CHASSIS  
GREASE) .

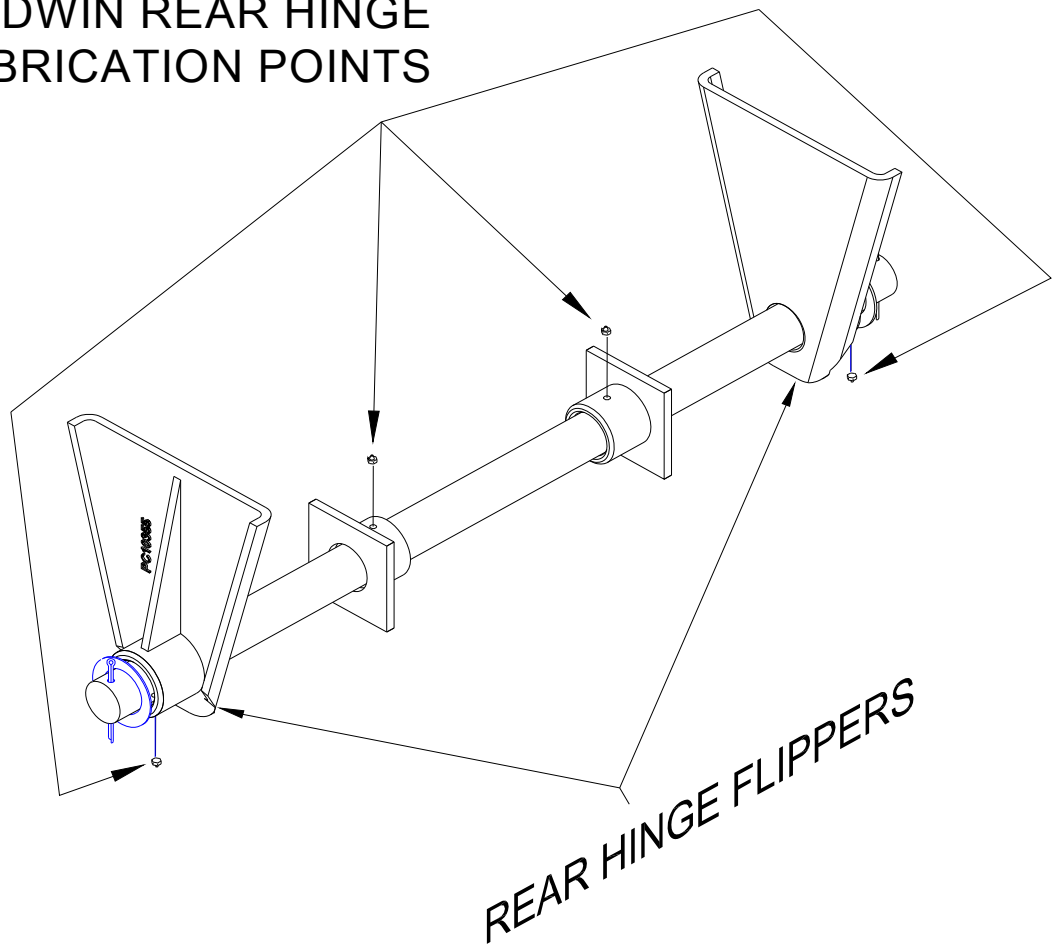
STEP #5 REINSTALL BOLTS AND WASHERS AND EVENLY  
TORQUE ASSEMBLY BOLTS TO 200 FOOT LBS.

C102 PUMP REVERSE ROTATION

CHAMPION  
Hoist and Equipment

MP50078

## GODWIN REAR HINGE LUBRICATION POINTS



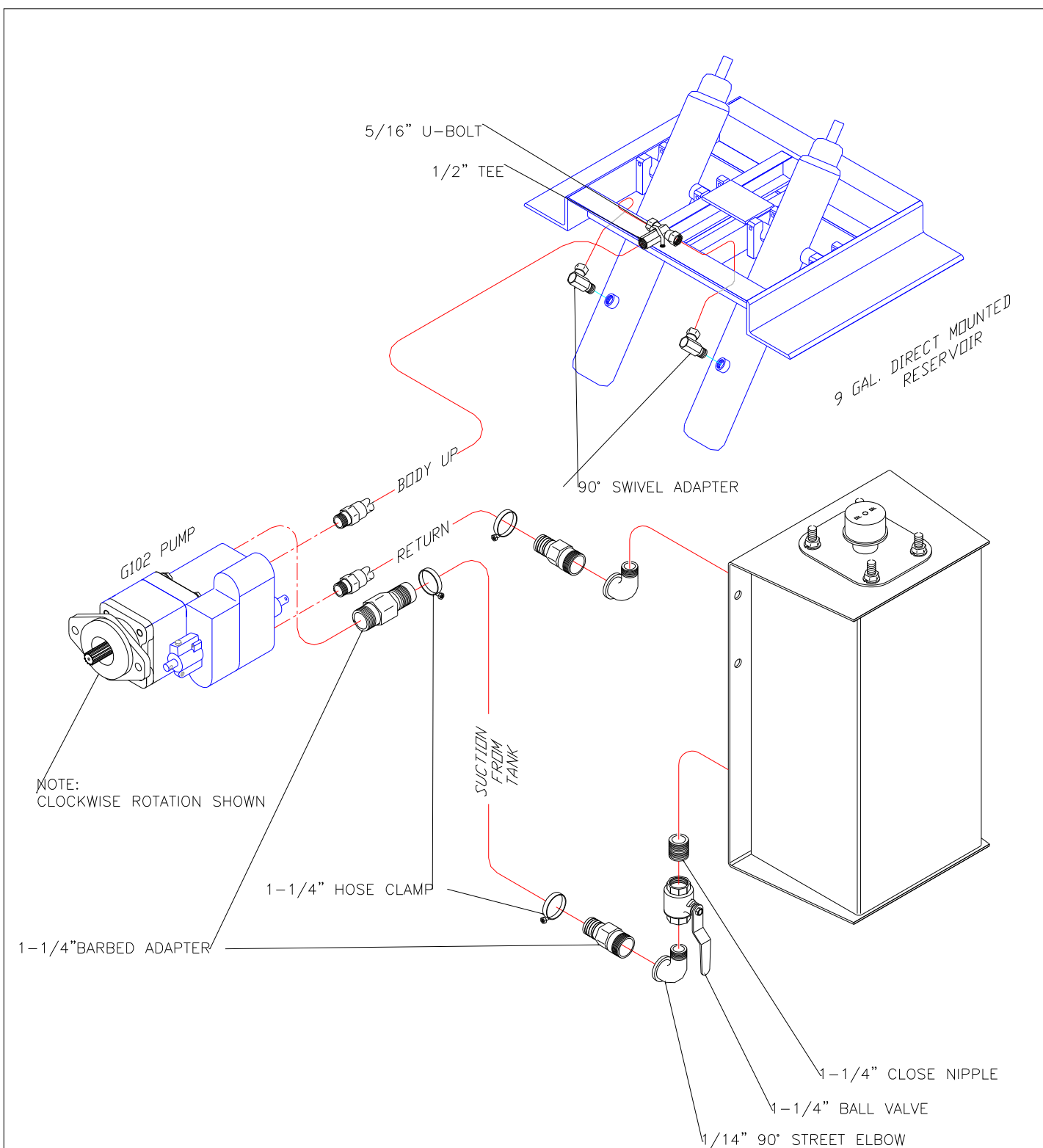
NOTE: USE GENERAL PURPOSE CHASSIS GREASE

- \* Grease hoist and rear hinge assembly each time truck is serviced.

REAR HINGE LUBRICATION

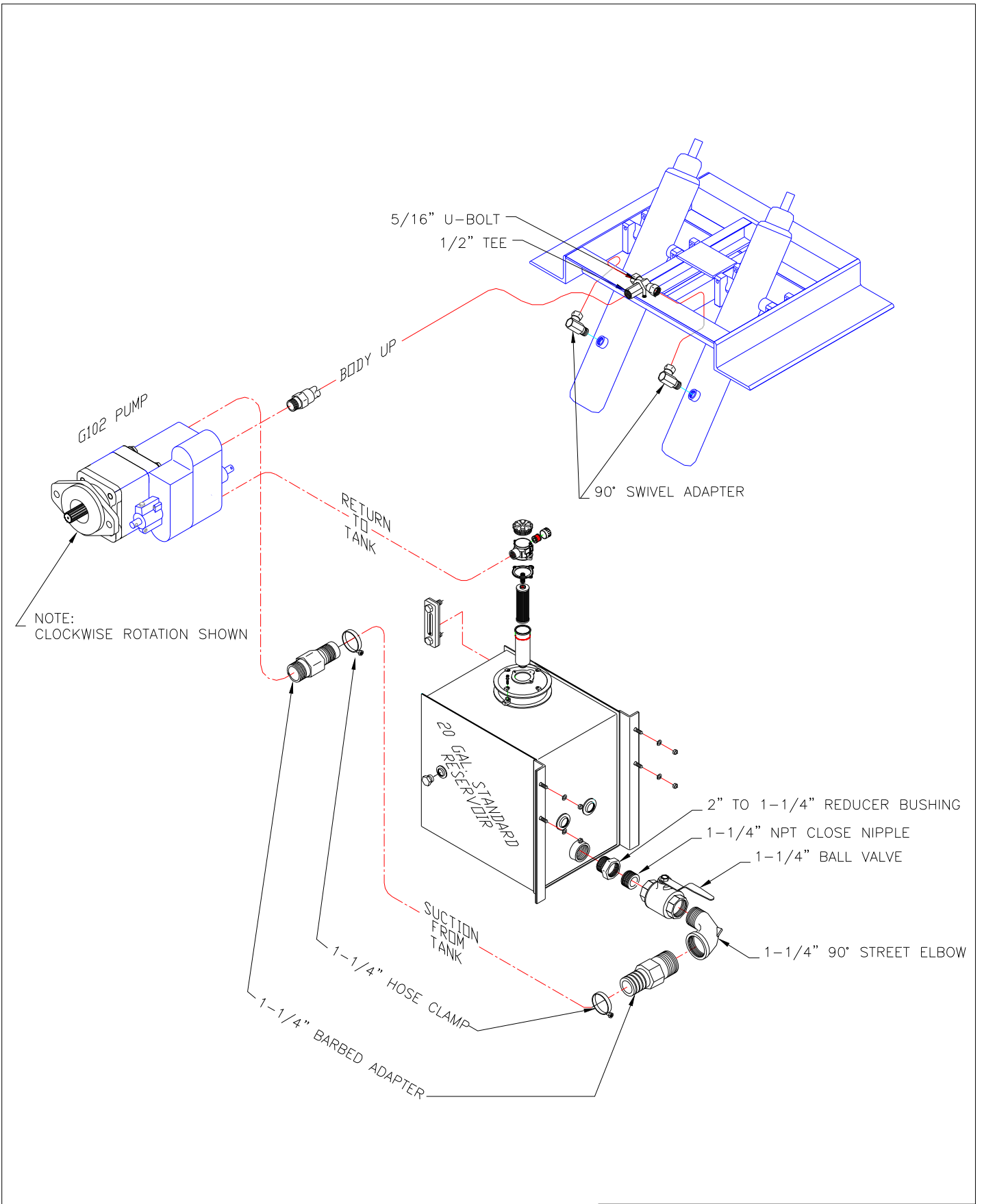
CHAMPION  
Hoist and Equipment

MP50105



**NOTE: RESERVOIR TANK HAS (2) 1-1/4" FLANGES ON THE BOTTOM  
EITHER OF THE 2 COULD BE USED FOR SUCTION/RETURN TO TANK.**

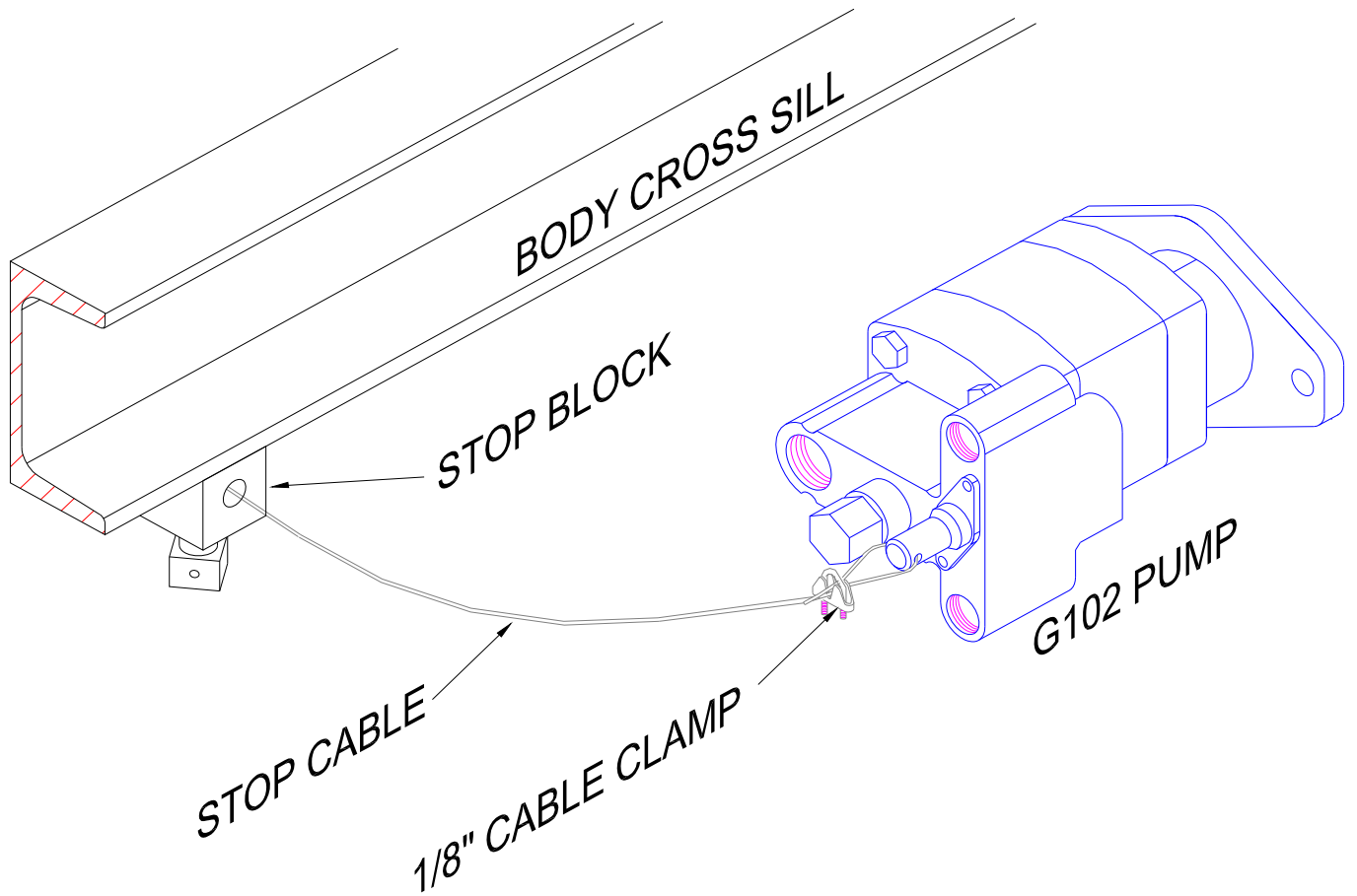
<b>4250T &amp; 4154T W/G102 PUMP PLUMB DIAGRAM</b>	
GODWIN MFG. CO., INC. DUNN, NORTH CAROLINA	<b>PD40032</b>



**4398T & 5390T W/C102 PUMP  
PLUMB DIAGRAM**

GODWIN MFG. CO., INC.  
DUNN, NORTH CAROLINA

**PD40033**



**STOP CABLE INSTALLATION**

CHAMPION  
Hand and Equipment

**MP50090**