

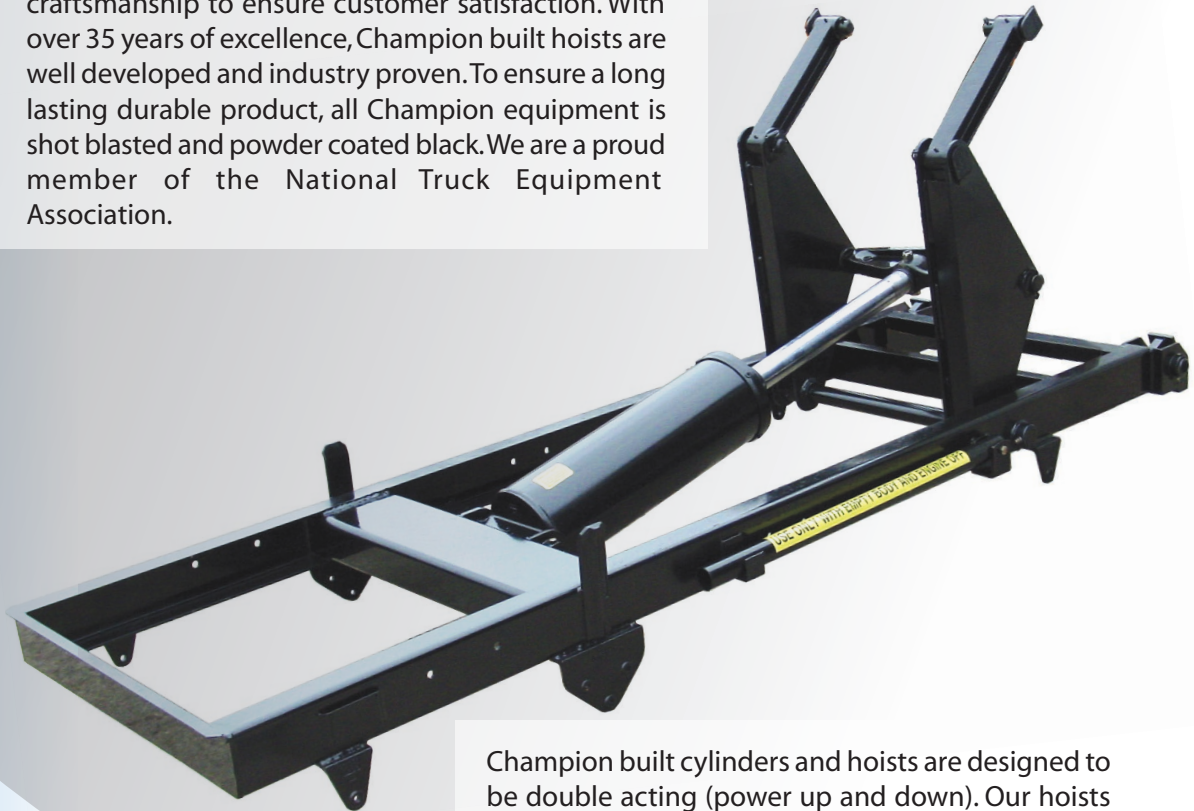
**POWDER
COATED
PRIMER**



U850D / U860D Hoist

Experience that Matters

Dedicated to perfection and continuing to lead the industry, Champion Hoist and Equipment™ has a low tolerance for defects and a strong desire for quality craftsmanship to ensure customer satisfaction. With over 35 years of excellence, Champion built hoists are well developed and industry proven. To ensure a long lasting durable product, all Champion equipment is shot blasted and powder coated black. We are a proud member of the National Truck Equipment Association.



Champion built cylinders and hoists are designed to be double acting (power up and down). Our hoists are easy to install with as little truck and body modification as possible. To further ease the installation process, Champion hoists mount to the body and truck chassis using heavy duty grade 8 bolts with little or no welding needed.

With over 30 hoists offered,
Champion Hoist and Equipment™
is sure to have what you need.

Visit Champion Hoist and Equipment™
and all affiliated companies
on the world wide web.
www.championtruckhoist.com

U850D / U860D Hoists

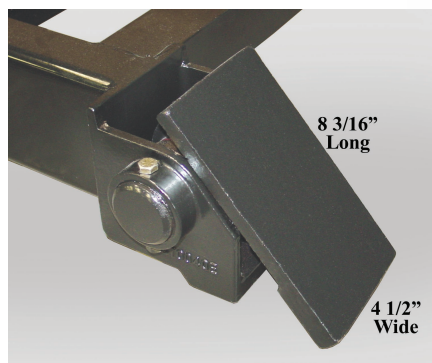


Shown is the U850D/U860D heavy duty cast lift arms. These arms easily attach directly to the body using 4140 grade, 1 1/2" pivot pins. The arms have easily accessible zerck grease fittings.

This Subframe is built with A572 grade 50 high tensile steel & 4140 grade weldable castings



This hoist is easily installed on the trucks chassis using extra heavy duty 4140 grade cast mounting brackets, With 12 grade 8 bolts and minimal welding. Installation is quick and easy.



The U850D/U860D's hinges are cast from extra heavy duty 4140 grade steel to ensure durability. Adding to the ease of installation and durability, these hinges are welded directly to the body's longitudinals.

Application Specifications

The U850D/U860D hoist is designed for trucks with 84" CA. This hoist is perfect for 10' bodies and has a dumping angle of 50 degrees. For the most durable combination, 6" body longitudinals are recommended. All Champion manufactured hoist are Powder Coated Tough™ and are rigorously inspected by quality control to ensure top quality. The U850D/U860D hoist is equipped with one 8" cylinder with a 20" stroke 2 1/2" chrome shaft. The U850D hoist is changed to an U860D with an increase in pressure from 1800 psi to 2300 psi.

U850D is equivalent to class 50
U860D is equivalent to class 60

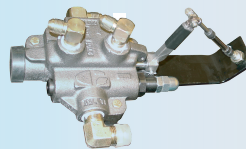
Available Components



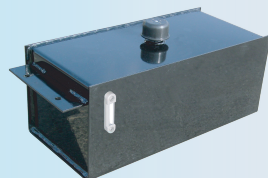
The G102D pump/valve combination direct mount gear pump does not require a drive line thus making it safer and more dependable. This pump has an S.A.E. "B" 2-bolt flange. 15 GPM @1200 RPM



The P22 direct gear pump is bi-rotational with side and rear ports for versatility, thus eliminating the drive line for added safety and dependability. This pump has an S.A.E. "B" 2-bolt flang. 15 GPM @1200 RPM



The SP4 valve with cable and lever control is used in conjunction with the P22 pump. This valve is easy to install and makes the hydraulic system double acting.



The 8.5 gallon box type reservoir is designed to be frame mounted. It hangs out of the way and is equipped with a brass wire mesh suction strainer, oil level & temperature gauge.

Champion Hoist and Equipment™

200 Champion Drive

Dunn, NC 28334

(910) 897-4995 Fax (910) 897-7306

Champion Hoist and Equipment™ is an affiliate of



8/17/06